

Anti-M6PR antibody (27-185) (STJ11100783)

GENERAL INFORMATION

Product Type	Primary antibodies
Applications	WB/IHC-P/ELISA
Host / Source	Rabbit
Reactivity	Human/Mouse/Rat

PRODUCT PROPERTIES

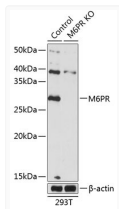
Clonality	Polyclonal
Concentration	Lot specific
Conjugation	Unconjugated
Purification	Affinity purification
Dilution Range	WB:1:500-1:2000 IHC-P:1:50-1:200 ELISA:Recommended starting concentration is 1 µg/mL. Please optimize the concentration based on your specific assay requirements.
Formulation	PBS with 0.01% Thimerosal, 50% Glycerol, pH 7.3.
Isotype	IgG
Molecular Weight	Protein Mw: 31kDa Observed Mw: 31kDa
Storage Instruction	Store at -20°C for up to 1 year from the date of receipt, and avoid repeat freeze-thaw cycles.

TARGET INFORMATION

Gene ID	4074
Gene Symbol	M6PR
UniProt ID	MPRD_HUMAN
Immunogen Region	27-185
Immunogen Sequence	TEEKTCDLVGEKKGKESKEL ALVKRLKPLFNKSFESTVGQ GSDTYIYIFRVCREAGNHTS GAGLVQINKSNGKETVVGRL NETHIFNGSNWIMLIYKGGD EYDNHCGKEQRRRAVVMISCN RHTLADNFPVSEERKGVQD CFYLFEMDSSLACSPESH
Specificity	Recombinant fusion protein containing a sequence corresponding to amino acids 27-185 of human M6PR (NP_002346.1).

ADDITIONAL INFORMATION

Note **STRICTLY FOR FURTHER SCIENTIFIC RESEARCH USE ONLY (RUO). MUST NOT TO BE USED IN DIAGNOSTIC OR THERAPEUTIC APPLICATIONS.**



Western blot analysis of lysates from wild type (WT) and M6PR knockout (KO) 293T cells, using [KO Validated] M6PR Rabbit polyclonal antibody (STJ11100783) at 1:500 dilution. Secondary antibody: HRP Goat Anti-Rabbit IgG (H+L) (STJS000856) at 1:10000 dilution. Lysates/proteins: 25 µg per lane. Blocking buffer: 3% nonfat dry milk in TBST. Detection: ECL Basic Kit. Exposure time: 1s.