

Anti-NANS antibody (260-359) (STJ11100751)

GENERAL INFORMATION

Product Type	Primary antibodies
Applications	WB/ELISA
Host / Source	Rabbit
Reactivity	Human

PRODUCT PROPERTIES

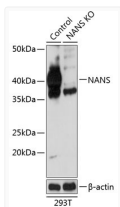
Clonality	Polyclonal
Concentration	Lot specific
Conjugation	Unconjugated
Purification	Affinity purification
Dilution Range	WB:1:500-1:2000 ELISA:Recommended starting concentration is 1 Mu g/mL. Please optimize the concentration based on your specific assay requirements.
Formulation	PBS with 0.01% Thimerosal, 50% Glycerol, pH 7.3.
Isotype	IgG
Molecular Weight	Protein Mw: 40kDa Observed Mw: 40kDa
Storage Instruction	Store at-20°C for up to 1 year from the date of receipt, and avoid repeat freeze-thaw cycles.

TARGET INFORMATION

Gene ID	54187
Gene Symbol	NANS
UniProt ID	SIAS_HUMAN
Immunogen Region	260-359
Immunogen Sequence	AELVRSVRLVERALGSPSTKQ LLPCEMACNEKLGKSVVAKV KIPEGTILTMDMMLTVKVGEP KGYPPEDIFNLVGKKVLTV EEDDTIMEELVDNHGKKIKS
Specificity	Recombinant fusion protein containing a sequence corresponding to amino acids 260-359 of human NANS (NP_061819.2).

ADDITIONAL INFORMATION

Note STRICTLY FOR FURTHER SCIENTIFIC RESEARCH USE ONLY (RUO). MUST NOT TO BE USED IN DIAGNOSTIC OR THERAPEUTIC APPLICATIONS.



Western blot analysis of lysates from wild type (WT) and NANS knockout (KO) 293T cells, using [KO Validated] NANS Rabbit polyclonal antibody (STJ11100751) at 1:1000 dilution. Secondary antibody: HRP Goat Anti-Rabbit IgG (H+L) (STJS000856) at 1:10000 dilution. Lysates/proteins: 25 Mu g per lane. Blocking buffer: 3% nonfat dry milk in TBST. Detection: ECL Basic Kit. Exposure time: 1s.