

Anti-PSME2 antibody (1-239) (STJ11100740)

GENERAL INFORMATION

Product Type	Primary antibodies
Applications	WB/ELISA
Host / Source	Rabbit
Reactivity	Human/Mouse

PRODUCT PROPERTIES

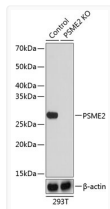
Clonality	Polyclonal
Concentration	Lot specific
Conjugation	Unconjugated
Purification	Affinity purification
Dilution Range	WB:1:500-1:2000 ELISA:Recommended starting concentration is 1 Mu g/mL. Please optimize the concentration based on your specific assay requirements.
Formulation	PBS with 0.01% Thimerosal, 50% Glycerol, pH 7.3.
Isotype	IgG
Molecular Weight	Protein Mw: 27kDa Observed Mw: 27kDa
Storage Instruction	Store at -20°C for up to 1 year from the date of receipt, and avoid repeat freeze-thaw cycles.

TARGET INFORMATION

Gene ID	5721
Gene Symbol	PSME2
UniProt ID	PSME2_HUMAN
Immunogen Region	1-239
Immunogen Sequence	MAKPCGVRLSGEARKQVEVF RQNLFQEAEEFLYRFLPQKI IYLNQLQEDSLNVADLTSL RAPLDIPIPDPPPKDDEMET DKQEKKEVHKCGFLPGNEKV LSLALVKPEVWTLKEKCIL VITWQHILIPKIEDGNDFGV AIQEKVLERVNAVKTKEAF QTTISKYFSEKRGDAVAKASK ETHVMDYRALVHERDEAAYG ELRAMVLDLRAFYAELYHII SSNLEKIVNPKGEEKPSMY
Specificity	Recombinant fusion protein containing a sequence corresponding to amino acids 1-239 of human PSME2 (NP_002809.2).

ADDITIONAL INFORMATION

Note STRICTLY FOR FURTHER SCIENTIFIC RESEARCH USE ONLY (RUO). MUST NOT TO BE USED IN DIAGNOSTIC OR THERAPEUTIC APPLICATIONS.



Western blot analysis of lysates from wild type (WT) and PSME2 knockout (KO) 293T cells, using [KO Validated] PSME2 Rabbit polyclonal antibody (STJ11100740) at 1:1000 dilution. Secondary antibody: HRP Goat Anti-Rabbit IgG (H+L) (STJS000856) at 1:10000 dilution. Lysates/proteins: 25 Mu g per lane. Blocking buffer: 3% nonfat dry milk in TBST. Detection: ECL Basic Kit. Exposure time: 1s.