

## Anti-GCN1L1 antibody (2462-2671) (STJ11100727)

### GENERAL INFORMATION

Product Type	Primary antibodies
Applications	WB/ELISA
Host / Source	Rabbit
Reactivity	Human

### PRODUCT PROPERTIES

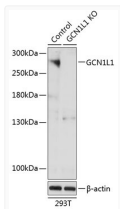
Clonality	Polyclonal
Concentration	Lot specific
Conjugation	Unconjugated
Purification	Affinity purification
Dilution Range	WB:1:500-1:2000 ELISA:Recommended starting concentration is 1 Mu g/mL. Please optimize the concentration based on your specific assay requirements.
Formulation	PBS with 0.01% Thimerosal, 50% Glycerol, pH 7.3.
Isotype	IgG
Molecular Weight	Protein Mw: 293kDa Observed Mw: 275kDa
Storage Instruction	Store at -20°C for up to 1 year from the date of receipt, and avoid repeat freeze-thaw cycles.

### TARGET INFORMATION

Gene ID	<a href="#">10985</a>
Gene Symbol	<a href="#">GCN1</a>
UniProt ID	<a href="#">GCN1_HUMAN</a>
Immunogen Region	2462-2671
Immunogen Sequence	LSAVLQQCLLADVSGIDWMV RHGRSLALSVAVNVAPGRLC AGRYSSDVQEMILSSATADR IPIAVSGVRGMGFLMRHHIE TGGGQLPAKLSSLFVKCLQN PSSDIRLVAEKMIWWANKDP LPPLDPQAIKPKLALLDNT KDKNTVVRAYSQDAIVNLLK MRQGEEVFQSLSKILDVASL EVLNEVNRRLSKLASQADS TEQVDDTILT
Specificity	Recombinant fusion protein containing a sequence corresponding to amino acids 2462-2671 of human GCN1L1 (NP_006827.1).

### ADDITIONAL INFORMATION

Note STRICTLY FOR FURTHER SCIENTIFIC RESEARCH USE ONLY (RUO). MUST NOT TO BE USED IN DIAGNOSTIC OR THERAPEUTIC APPLICATIONS.



Western blot analysis of lysates from wild type (WT) and GCN1L1 knockout (KO) 293T cells, using [KO Validated] GCN1L1 Rabbit polyclonal antibody (STJ11100727) at 1:3000 dilution. Secondary antibody: HRP Goat Anti-Rabbit IgG (H+L) (STJS000856) at 1:10000 dilution. Lysates/proteins: 25 Mu g per lane. Blocking buffer: 3% nonfat dry milk in TBST. Detection: ECL Basic Kit. Exposure time: 30S.