

Anti-ATG4A antibody (289-398) (STJ11100720)

GENERAL INFORMATION

Product Type	Primary antibodies
Applications	WB/ELISA
Host / Source	Rabbit
Reactivity	Human/Mouse

PRODUCT PROPERTIES

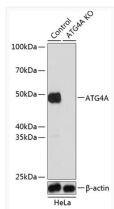
Clonality	Polyclonal
Concentration	Lot specific
Conjugation	Unconjugated
Purification	Affinity purification
Dilution Range	WB:1:500-1:2000 ELISA:Recommended starting concentration is 1 µg/mL. Please optimize the concentration based on your specific assay requirements.
Formulation	PBS with 0.01% Thimerosal, 50% Glycerol, pH 7.3.
Isotype	IgG
Molecular Weight	Protein Mw: 45kDa Observed Mw: 50kDa
Storage Instruction	Store at -20°C for up to 1 year from the date of receipt, and avoid repeat freeze-thaw cycles.

TARGET INFORMATION

Gene ID	115201
Gene Symbol	ATG4A
UniProt ID	ATG4A_HUMAN
Immunogen Region	289-398
Immunogen Sequence	TEENGTVNDQTFHCLQSPQR MNILNLDPSVALGFFCKEEK DFDNWCSLVQKEILKENLRM FELVQKHPSHWPPFVPPAKP EVTTTGAEFIDSTEQLLEFD LEEDFEILSV
Specificity	Recombinant fusion protein containing a sequence corresponding to amino acids 289-398 of human ATG4A (NP_443168.2).

ADDITIONAL INFORMATION

Note STRICTLY FOR FURTHER SCIENTIFIC RESEARCH USE ONLY (RUO). MUST NOT TO BE USED IN DIAGNOSTIC OR THERAPEUTIC APPLICATIONS.



Western blot analysis of lysates from wild type (WT) and ATG4A knockout (KO) HeLa cells, using [KO Validated] ATG4A Rabbit polyclonal antibody (STJ11100720) at 1:1000 dilution. Secondary antibody: HRP Goat Anti-Rabbit IgG (H+L) (STJS000856) at 1:10000 dilution. Lysates/proteins: 25 µg per lane. Blocking buffer: 3% nonfat dry milk in TBST. Detection: ECL Basic Kit. Exposure time: 5s.