

Anti-IL1RL1 antibody (19-328) (STJ11100593)

GENERAL INFORMATION

Product Type	Primary antibodies
Applications	WB/ELISA
Host / Source	Rabbit
Reactivity	Human/Mouse/Rat

PRODUCT PROPERTIES

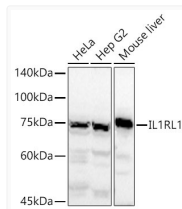
Clonality	Polyclonal
Concentration	Lot specific
Conjugation	Unconjugated
Purification	Affinity purification
Dilution Range	WB:1:500-1:2000 ELISA:Recommended starting concentration is 1 Mu g/mL. Please optimize the concentration based on your specific assay requirements.
Formulation	PBS with 0.05% Proclin300, 50% Glycerol, pH 7.3.
Isotype	IgG
Molecular Weight	Protein Mw: 63kDa Observed Mw: 30kDa/41kDa/70kDa
Storage Instruction	Store at -20°C for up to 1 year from the date of receipt, and avoid repeat freeze-thaw cycles.

TARGET INFORMATION

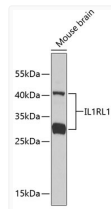
Gene ID	9173
Gene Symbol	IL1RL1
UniProt ID	ILRL1_HUMAN
Immunogen Region	19-328
Immunogen Sequence	KFSKQSWGLENEALIVRCPR QGKPSYTDWYYSQTNKSIP TQERNRVFASGQLLKFLPAA VADSGIYTCIVRSPTFNRTG YANVTIYKKQSDCNVPDYLM YSTVSGSEKNSKIYCPTIDL YNWTAPELWFKNCQALQGSR YRAHKSFLVIDNVMTEADGD YTCKFIHNENGANYSVTATR SFTVKDEQGFSLFPVIGAPA QNEIKEVEIGKNANLTCASAC FGKGTQFLAAVLWQLNGTK
Specificity	Recombinant fusion protein containing a sequence corresponding to amino acids 19-328 of human IL1RL1 (NP_057316.3).

ADDITIONAL INFORMATION

Note **STRICTLY FOR FURTHER SCIENTIFIC RESEARCH USE ONLY (RUO). MUST NOT TO BE USED IN DIAGNOSTIC OR THERAPEUTIC APPLICATIONS.**



Western blot analysis of various lysates using IL1RL1 Rabbit polyclonal antibody (STJ11100593) at 1:1000 dilution. Secondary antibody:HRP Goat Anti-Rabbit IgG (H+L) (STJS000856) at 1:10000 dilution. Lysates/ proteins: 25 Mu g per lane. Blocking buffer: 3 % nonfat dry milk in TBST. Detection:ECL Basic Kit. Exposure time: 60s.



Western blot analysis of lysates from mouse brain, using IL1RL1 Rabbit polyclonal antibody (STJ11100593). Secondary antibody: HRP Goat Anti-Rabbit IgG (H+L) (STJS000856) at 1:10000 dilution. Lysates/proteins: 25 Mu g per lane. Blocking buffer: 3% nonfat dry milk in TBST.