

Anti-SIGLEC15 antibody (20-263) (STJ11100588)

GENERAL INFORMATION

Product Type	Primary antibodies
Applications	WB/IHC-P/IF/ICC/ELISA
Host / Source	Rabbit
Reactivity	Human/Rat

PRODUCT PROPERTIES

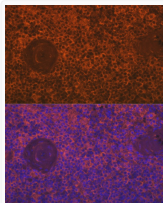
Clonality	Polyclonal
Concentration	Lot specific
Conjugation	Unconjugated
Purification	Affinity purification
Dilution Range	WB:1:500-1:1000 IHC-P:1:50-1:200 IF/CC:1:50-1:200 ELISA:Recommended starting concentration is 1 µg/mL. Please optimize the concentration based on your specific assay requirements.
Formulation	PBS with 0.01% Thimerosal, 50% Glycerol, pH 7.3.
Isotype	IgG
Molecular Weight	Protein Mw: 36kDa Observed Mw: 36kDa
Storage Instruction	Store at -20°C for up to 1 year from the date of receipt, and avoid repeat freeze-thaw cycles.

TARGET INFORMATION

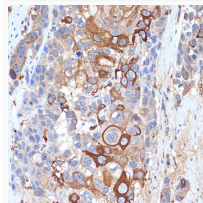
Gene ID	284266
Gene Symbol	SIGLEC15
UniProt ID	SIG15_HUMAN
Immunogen Region	20-263
Immunogen Sequence	FVRTKIDTTENLLNTEVHSS PAQRWSMQVPPEVSAEAGDA AVLPCFTFHPHRHYDGPLTA IWRAGEPYAGQVFRCAAR GSELCQTALS LHGRFRLGN PRRNDLSLRVERLALADDDR YFCRVEFAGDVHDRYESRHG VRLHVTAAPRIVNISVLPSP AHAFRALCTAEGEPPPALAW SGPALGNLSLAAVRSPREGHG HLVTAELPALTHDGRYTCTA ANSLGRSEASVYLFRLFHGA
Specificity	Recombinant fusion protein containing a sequence corresponding to amino acids 20-263 of human Siglec-15 (NP_998767.1).

ADDITIONAL INFORMATION

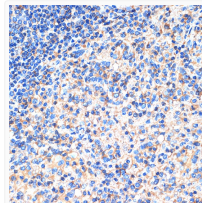
Note STRICTLY FOR FURTHER SCIENTIFIC RESEARCH USE ONLY (RUO). MUST NOT TO BE USED IN DIAGNOSTIC OR THERAPEUTIC APPLICATIONS.



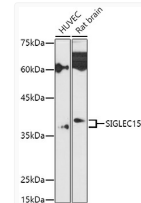
Immunofluorescence analysis of paraffin-embedded human spleen using Siglec-15 Rabbit polyclonal antibody (STJ11100588) at dilution of 1:100 (40x lens). Secondary antibody: Cy3 Goat Anti-Rabbit IgG (H+L) at 1:500 dilution. Blue: DAPI for nuclear staining.



Immunohistochemistry analysis of Siglec-15 in paraffin-embedded human esophageal cancer using Siglec-15 Rabbit polyclonal antibody (STJ11100588) at dilution of 1:100 (40x lens). Perform microwave antigen retrieval with 10 mM Tris/EDTA buffer pH 9.0 before commencing with immunohistochemistry staining protocol.



Immunohistochemistry analysis of Siglec-15 in paraffin-embedded human spleen using Siglec-15 Rabbit polyclonal antibody (STJ11100588) at dilution of 1:100 (40x lens). Perform microwave antigen retrieval with 10 mM Tris/EDTA buffer pH 9.0 before commencing with immunohistochemistry staining protocol.



Western blot analysis of various lysates using Siglec-15 Rabbit polyclonal antibody (STJ11100588) at 1:1000 dilution. Secondary antibody: HRP Goat Anti-Rabbit IgG (H+L) (STJS000856) at 1:10000 dilution. Lysates/proteins: 25 µg per lane. Blocking buffer: 3% nonfat dry milk in TBST. Detection: ECL Basic Kit. Exposure time: 180s.