

Anti-CENPF antibody (1730-1890) (STJ11100576)

GENERAL INFORMATION

Product Type	Primary antibodies
Applications	WB/ELISA
Host / Source	Rabbit
Reactivity	Human/Mouse

PRODUCT PROPERTIES

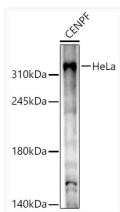
Clonality	Polyclonal
Concentration	Lot specific
Conjugation	Unconjugated
Purification	Affinity purification
Dilution Range	WB:1:500-1:1000 ELISA:Recommended starting concentration is 1 µg/mL. Please optimize the concentration based on your specific assay requirements.
Formulation	PBS with 0.05% Proclin300, 50% Glycerol, pH 7.3.
Isotype	IgG
Molecular Weight	Protein Mw: 358kDa Observed Mw: 330kDa
Storage Instruction	Store at -20°C for up to 1 year from the date of receipt, and avoid repeat freeze-thaw cycles.

TARGET INFORMATION

Gene ID	1063
Gene Symbol	CENPF
UniProt ID	CENPF_HUMAN
Immunogen Region	1730-1890
Immunogen Sequence	NYEPPGEDKTQGSSECISEL SFGSPNALVPMDFLGNQEDI HNLQLRVKETSNNENLRLLHV IEDRDRKVESLLNEMKELDS KLHLQEVQLMTKIEACIELE KIVGELKKENSDDLSEKLEYF SCDHQELLQRVETSEGLNSD LEMHADKSSREDIGDNVAKV N
Specificity	Recombinant fusion protein containing a sequence corresponding to amino acids 1730-1890 of human CENPF (NP_057427.3).

ADDITIONAL INFORMATION

Note STRICTLY FOR FURTHER SCIENTIFIC RESEARCH USE ONLY (RUO). MUST NOT TO BE USED IN DIAGNOSTIC OR THERAPEUTIC APPLICATIONS.



Western blot analysis of HeLa, using CENPF Rabbit polyclonal antibody (STJ11100576) at 1:1000 dilution. Secondary antibody: HRP Goat Anti-Rabbit IgG (H+L) (STJS000856) at 1:10000 dilution. Lysates/proteins: 25 µg per lane. Blocking buffer: 3% nonfat dry milk in TBST. Detection: ECL Basic Kit. Exposure time: 60s.