

## Anti-ADGRE1 antibody (367-931) (STJ11100571)

### GENERAL INFORMATION

Product Type	Primary antibodies
Applications	WB/IF/ICC/ELISA
Host / Source	Rabbit
Reactivity	Human/Mouse

### PRODUCT PROPERTIES

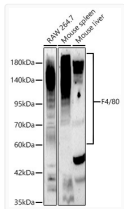
Clonality	Polyclonal
Concentration	Lot specific
Conjugation	Unconjugated
Purification	Affinity purification
Dilution Range	WB:1:1000-1:5000 IF/CC:1:50-1:200 ELISA:Recommended starting concentration is 1 Mu g/mL. Please optimize the concentration based on your specific assay requirements.
Formulation	PBS with 0.05% Proclin300, 50% Glycerol, pH 7.3.
Isotype	IgG
Molecular Weight	Protein Mw: 102kDa Observed Mw: 65-250kDa
Storage Instruction	Store at -20°C for up to 1 year from the date of receipt, and avoid repeat freeze-thaw cycles.

### TARGET INFORMATION

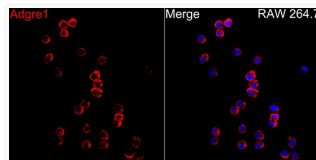
Gene ID	<a href="#">13733</a>
Gene Symbol	<a href="#">Adgre1</a>
UniProt ID	<a href="#">AGRE1_MOUSE</a>
Immunogen Region	367-931
Immunogen Sequence	KRILFKCKEDLILQSEIQIQ CQAVQGRDLGYASFCTLVNA TFTILDNTCENKSAPVSLQS AATSVSLVLEQATTWFELSK EETSTLGTILLETVESTMLA ALLIPSGNASQMIQTEYLDI ESKVINEECKENESINLAAR GDKMNVGCFIKEVSTGAP GVAFVSFAHMESVNLNERFFE DGQSFRLKLRMNSRVVGGT VT GEKKEDFSKPIIYTLQHIQP KQKSERPICVSWNTDVEDG
Specificity	Recombinant fusion protein containing a sequence corresponding to amino acids 367-645 of mouse F4/80 (NP_034260.1).

### ADDITIONAL INFORMATION

Note STRICTLY FOR FURTHER SCIENTIFIC RESEARCH USE ONLY (RUO). MUST NOT TO BE USED IN DIAGNOSTIC OR THERAPEUTIC APPLICATIONS.



Western blot analysis of various lysates using F4/80 rabbit polyclonal antibody (STJ11100571) at 1:2000 dilution. Secondary antibody:HRP Goat Anti-rabbit IgG (H+L) (STJS000856) at 1:10000 dilution. Lysates/ proteins: 25 Mu g per lane. Blocking buffer: 3 % non-fat dry milk in TBST. Detection:ECL Basic Kit. Exposure time: 90s.



Immunofluorescence analysis of RAW264.7 cells using F4/80 rabbit polyclonal antibody (STJ11100571) at dilution of 1:20 (40x lens). Secondary antibody: Cy3 Goat Anti-rabbit IgG (H+L) at 1:500 dilution. Blue: DAPI for nuclear staining.