

## Anti-Histone H1 antibody (110-209) (STJ11100542)

### GENERAL INFORMATION

Product Type	Primary antibodies
Applications	WB/IF/ICC/ELISA
Host / Source	Rabbit
Reactivity	Mouse/Rat

### PRODUCT PROPERTIES

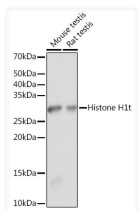
Clonality	Polyclonal
Concentration	Lot specific
Conjugation	Unconjugated
Purification	Affinity purification
Dilution Range	WB:1:500-1:2000 IF/CC:1:50-1:200 ELISA:Recommended starting concentration is 1 µg/mL. Please optimize the concentration based on your specific assay requirements.
Formulation	PBS with 0.01% Thimerosal, 50% Glycerol, pH 7.3.
Isotype	IgG
Molecular Weight	Protein Mw: 22kDa Observed Mw: 30kDa
Storage Instruction	Store at -20°C for up to 1 year from the date of receipt, and avoid repeat freeze-thaw cycles.

### TARGET INFORMATION

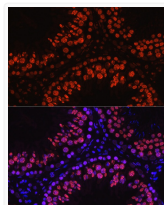
Gene ID	<a href="#">107970</a>
Gene Symbol	<a href="#">H1-6</a>
UniProt ID	<a href="#">H1T_MOUSE</a>
Immunogen Region	110-209
Immunogen Sequence	LSKKAASGNDKGGKKSASA KAKKMGLPRASRSPKSSKTK AVKKPKATPTKASGSGRKTG GAKGVQQRKSPAKARAANPN SGKAKMVMQKTDLRKAAGRK
Specificity	A synthetic peptide corresponding to a sequence within amino acids 110-209 of mouse Histone H1t (NP_034507.2).

### ADDITIONAL INFORMATION

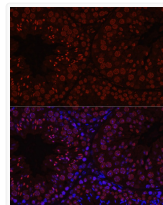
Note STRICTLY FOR FURTHER SCIENTIFIC RESEARCH USE ONLY (RUO). MUST NOT TO BE USED IN DIAGNOSTIC OR THERAPEUTIC APPLICATIONS.



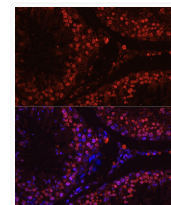
Western blot analysis of extracts of various cell lines, using Histone H1t antibody (STJ11100542) at 1:3000 dilution. Secondary antibody: HRP Goat Anti-rabbit IgG (H+L) (STJS000856) at 1:10000 dilution. Lysates/proteins: 25 µg per lane. Blocking buffer: 3% non-fat dry milk in TBST. Detection: ECL Basic Kit. Exposure time: 1s.



Immunofluorescence analysis of rat testis using Histone H1t rabbit polyclonal antibody (STJ11100542) at dilution of 1:100 (40x lens). Blue: DAPI for nuclear staining.



Immunofluorescence analysis of mouse testis using Histone H1t rabbit polyclonal antibody (STJ11100542) at dilution of 1:100 (40x lens). Blue: DAPI for nuclear staining.



Immunofluorescence analysis of mouse testis using Histone H1t rabbit polyclonal antibody (STJ11100542) at dilution of 1:100 (40x lens). Blue: DAPI for nuclear staining.