

## Anti-APBA1 antibody (240-390) (STJ11100529)

### GENERAL INFORMATION

|               |                    |
|---------------|--------------------|
| Product Type  | Primary antibodies |
| Applications  | IHC-P/IF/ICC/ELISA |
| Host / Source | Rabbit             |
| Reactivity    | Human/Mouse        |

### PRODUCT PROPERTIES

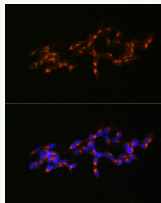
|                     |  |
|---------------------|--|
| Clonality           | Polyclonal   |
| Concentration       | Lot specific   |
| Conjugation         | Unconjugated   |
| Purification        | Affinity purification  |
| Dilution Range      | IHC-P:1:50-1:200<br>IF/ICC:1:50-1:200<br>ELISA:Recommended starting concentration is 1 µg/mL. Please optimize the concentration based on your specific assay requirements. |
| Formulation         | PBS with 0.01% Thimerosal, 50% Glycerol, pH 7.3.   |
| Isotype             | IgG  |
| Molecular Weight    | Protein Mw: 93kDa<br>Observed Mw: Refer to figures   |
| Storage Instruction | Store at -20°C for up to 1 year from the date of receipt, and avoid repeat freeze-thaw cycles.   |

### TARGET INFORMATION

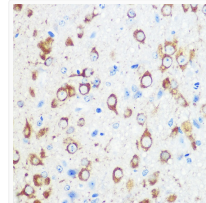
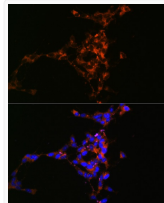
|                    |   |
|--------------------|---|
| Gene ID            | <a href="#">320</a>   |
| Gene Symbol        | <a href="#">APBA1</a>   |
| UniProt ID         | <a href="#">APBA1_HUMAN</a>   |
| Immunogen Region   | 240-390   |
| Immunogen Sequence | ERSDGEDSDSPEKEAEFAPYP RMDSYEQEEDIDQIVAEVKQ SMSSQSLDKAAEDMPEAEQD<br>LERPPTPAGGRPDSPGLQAP AGQQRVAVGPAGGGEAGQRYS KEKRDAISLAIKDIKEAIEE<br>VKTRTIRSPYTPDEPKPIW VMRQDISPTRD |
| Specificity        | Recombinant fusion protein containing a sequence corresponding to amino acids 240-390 of human APBA1 (NP_001154.2).   |

### ADDITIONAL INFORMATION

Note **STRICTLY FOR FURTHER SCIENTIFIC RESEARCH USE ONLY (RUO). MUST NOT TO BE USED IN DIAGNOSTIC OR THERAPEUTIC APPLICATIONS.**



Immunofluorescence analysis of SH-SY5Y cells using APBA1 Rabbit polyclonal antibody (STJ11100529) at dilution of 1:100 (40x lens). Secondary antibody: Cy3 Goat Anti-Rabbit IgG (H+L) at 1:500 dilution. Blue: DAPI for nuclear staining.



Immunohistochemistry analysis of APBA1 in paraffin-embedded mouse brain using APBA1 Rabbit polyclonal antibody (STJ11100529) at dilution of 1:100 (40x lens). Perform microwave antigen retrieval with 10 mM PBS buffer pH 7.2 before commencing with immunohistochemistry staining protocol.