

Anti-PRKG2 antibody (1-160) (STJ11100525)

GENERAL INFORMATION

Product Type	Primary antibodies
Applications	WB/IF/ICC/IP/ELISA
Host / Source	Rabbit
Reactivity	Mouse/Rat

PRODUCT PROPERTIES

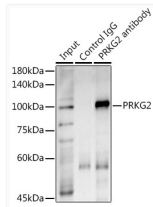
Clonality	Polyclonal
Concentration	Lot specific
Conjugation	Unconjugated
Purification	Affinity purification
Dilution Range	WB:1:500-1:2000 IF/CC:1:50-1:200 IP:0.5 Mu g-4 Mu g antibody for 400 Mu g-600 Mu g extracts of whole cells ELISA:Recommended starting concentration is 1 Mu g/mL. Please optimize the concentration based on your specific assay requirements
Formulation	PBS with 0.01% Thimerosal, 50% Glycerol, pH 7.3.
Isotype	IgG
Molecular Weight	Protein Mw: 87kDa Observed Mw: 100kDa
Storage Instruction	Store at -20°C for up to 1 year from the date of receipt, and avoid repeat freeze-thaw cycles.

TARGET INFORMATION

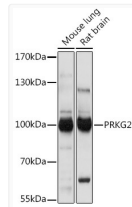
Gene ID	5593
Gene Symbol	PRKG2
UniProt ID	KGP2_HUMAN
Immunogen Region	1-160
Immunogen Sequence	MGNGSVKPKHSHKHPDGHSGN LTTDALRNKVTLELERLRK DAEIQEREYHLKELREQLSK QTVAIAELTEELQNKCIQLN KLQDVVHMQQGSPLOASPDK VPLEVHRKTSGLVSLHSRRG AKAGVSAEPTTRTYDLNKKPP EFSFEKARVRKDSSEKKLIT
Specificity	Recombinant fusion protein containing a sequence corresponding to amino acids 1-160 of human PRKG2 (NP_006250.1).

ADDITIONAL INFORMATION

Note **STRICTLY FOR FURTHER SCIENTIFIC RESEARCH USE ONLY (RUO). MUST NOT TO BE USED IN DIAGNOSTIC OR THERAPEUTIC APPLICATIONS.**



Immunoprecipitation analysis of 600 Mu g extracts of Mouse lung using 3 Mu g PRKG2 antibody (STJ11100525). Western blot was performed from the immunoprecipitate using PRKG2 antibody (STJ11100525) at a dilution of 1:1000.



Western blot analysis of various lysates using PRKG2 Rabbit polyclonal antibody (STJ11100525) at 1:1000 dilution. Secondary antibody: HRP Goat Anti-Rabbit IgG (H+L) (STJS000856) at 1:10000 dilution. Lysates/proteins: 25 Mu g per lane. Blocking buffer: 3% nonfat dry milk in TBST. Detection: ECL Basic Kit. Exposure time: 1s.