

## Anti-PPP2R1A/PPP2R2A/PPP2R1B antibody (1-161) (STJ11100522)

### GENERAL INFORMATION

Product Type	Primary antibodies
Applications	WB/ELISA
Host / Source	Rabbit
Reactivity	Human/Mouse/Rat

### PRODUCT PROPERTIES

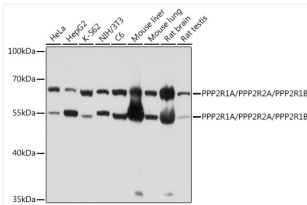
Clonality	Polyclonal
Concentration	Lot specific
Conjugation	Unconjugated
Purification	Affinity purification
Dilution Range	WB:1:500-1:2000 ELISA:Recommended starting concentration is 1 Mu g/mL. Please optimize the concentration based on your specific assay requirements.
Formulation	PBS with 0.01% Thimerosal, 50% Glycerol, pH 7.3.
Isotype	IgG
Molecular Weight	55kDa/66kDa
Storage Instruction	Store at -20°C for up to 1 year from the date of receipt, and avoid repeat freeze-thaw cycles.

### TARGET INFORMATION

Gene ID	<a href="#">5518</a> <a href="#">5520</a> <a href="#">5519</a> <a href="#">PPP2R1A</a> <a href="#">PPP2R2A</a> <a href="#">2AAA_HUMAN</a> <a href="#">2ABA_HUMAN</a> <a href="#">2AAB_HUMAN</a>
Immunogen Region	1-161
Immunogen Sequence	MAAADGDDSLYPIAVLIDEL RNEDVQLRLNSIKKLTSTIAL ALGVERTRSELLPFLTDTIY DEDEVLLALAEQLGFTTLV GGPEYVHCLLPPLSLATVE ETVVRDKAVESLRAISHEHS PSDLEAHFVPLVKRLAGGDW FTSRTSACGLFSVCYPRVSS A
Specificity	Recombinant fusion protein containing a sequence corresponding to amino acids 1-161 of human PPP2R1A/PPP2R2A/PPP2R1BPPP2R1A (NP_055040.2).

### ADDITIONAL INFORMATION

Note STRICTLY FOR FURTHER SCIENTIFIC RESEARCH USE ONLY (RUO). MUST NOT TO BE USED IN DIAGNOSTIC OR THERAPEUTIC APPLICATIONS.



Western blot analysis of various lysates using PPP2R1A/PPP2R2A/PPP2R1B Rabbit polyclonal antibody (STJ11100522) at 1:1000 dilution. Secondary antibody: HRP Goat Anti-Rabbit IgG (H+L) (STJS000856) at 1:10000 dilution. Lysates/proteins: 25 Mu g per lane. Blocking buffer: 3% nonfat dry milk in TBST. Detection: ECL Basic Kit. Exposure time: 10s.