

## Anti-ARRDC4 antibody (300-400) (STJ11100473)

### GENERAL INFORMATION

Product Type	Primary antibodies
Applications	WB/ELISA
Host / Source	Rabbit
Reactivity	Human

### PRODUCT PROPERTIES

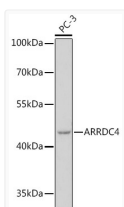
Clonality	Polyclonal
Concentration	Lot specific
Conjugation	Unconjugated
Purification	Affinity purification
Dilution Range	WB:1:500-1:2000 ELISA:Recommended starting concentration is 1 Mu g/mL. Please optimize the concentration based on your specific assay requirements.
Formulation	PBS with 0.01% Thimerosal, 50% Glycerol, pH 7.3.
Isotype	IgG
Molecular Weight	Protein Mw: 45kDa Observed Mw: 45kDa
Storage Instruction	Store at -20°C for up to 1 year from the date of receipt, and avoid repeat freeze-thaw cycles.

### TARGET INFORMATION

Gene ID	<a href="#">91947</a>
Gene Symbol	<a href="#">ARRDC4</a>
UniProt ID	<a href="#">ARRD4_HUMAN</a>
Immunogen Region	300-400
Immunogen Sequence	PGAKKLMLELPLVIGTIPYN GFGSRNSSIASQFSMDMSWL TLTLPQEPEAPPNYADVVSE EEFSRHIPPYPQPPNCEGEV CCPVFACIQEFRFPPLYS E
Specificity	A synthetic peptide corresponding to a sequence within amino acids 300-400 of human ARRDC4 (NP_899232.2).

### ADDITIONAL INFORMATION

Note STRICTLY FOR FURTHER SCIENTIFIC RESEARCH USE ONLY (RUO). MUST NOT TO BE USED IN DIAGNOSTIC OR THERAPEUTIC APPLICATIONS.



Western blot analysis of lysates from PC-3 cells, using ARRDC4 polyclonal antibody (STJ11100473) at 1:1000 dilution. Secondary antibody: HRP Goat Anti-Rabbit IgG (H+L) (STJS000856) at 1:10000 dilution. Lysates/proteins: 25 Mu g per lane. Blocking buffer: 3% nonfat dry milk in TBST. Detection: ECL Basic Kit. Exposure time: 60s.