

## Anti-LMAN2L antibody (189-348) (STJ11100456)

### GENERAL INFORMATION

|               |                    |
|---------------|--------------------|
| Product Type  | Primary antibodies |
| Applications  | WB/IF/ICC/ELISA    |
| Host / Source | Rabbit             |
| Reactivity    | Human/Mouse/Rat    |

### PRODUCT PROPERTIES

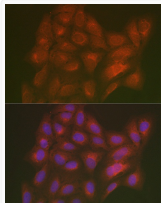
|                     |  |
|---------------------|--|
| Clonality           | Polyclonal   |
| Concentration       | Lot specific   |
| Conjugation         | Unconjugated   |
| Purification        | Affinity purification  |
| Dilution Range      | WB:1:500-1:1000<br>IF/CC:1:50-1:200<br>ELISA:Recommended starting concentration is 1 µg/mL. Please optimize the concentration based on your specific assay requirements. |
| Formulation         | PBS with 0.05% Proclin300, 50% Glycerol, pH 7.3.   |
| Isotype             | IgG  |
| Molecular Weight    | Protein Mw: 40kDa<br>Observed Mw: 40kDa  |
| Storage Instruction | Store at -20°C for up to 1 year from the date of receipt, and avoid repeat freeze-thaw cycles.   |

### TARGET INFORMATION

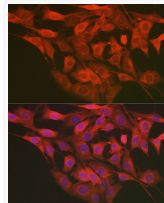
|                    |  |
|--------------------|--|
| Gene ID            | <a href="#">81562</a>  |
| Gene Symbol        | <a href="#">LMAN2L</a>   |
| UniProt ID         | <a href="#">LMA2L_HUMAN</a>  |
| Immunogen Region   | 189-348  |
| Immunogen Sequence | ERDGRPTELGGCTAIVRN LH YDTFLVIRYV KRHLTIMMDI DGKHEWRDCIEVPGVRLPRG<br>YYFGTSSITGDLSNDHVIS LKLFELTVERTPEEEKLHRD VFLPSVDNMKLPENTAPLPP<br>LSGLALFLVFFSLVFSVFA IVIGIILYNKWQEQRKRFY |
| Specificity        | Recombinant fusion protein containing a sequence corresponding to amino acids 189-348 of human LMAN2L (NP_110432.1).   |

### ADDITIONAL INFORMATION

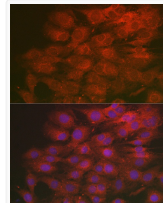
Note **STRICTLY FOR FURTHER SCIENTIFIC RESEARCH USE ONLY (RUO). MUST NOT TO BE USED IN DIAGNOSTIC OR THERAPEUTIC APPLICATIONS.**



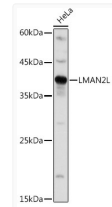
Immunofluorescence analysis of U2OS cells using LMAN2L Rabbit polyclonal antibody (STJ11100456) at dilution of 1:200 (40x lens). Blue: DAPI for nuclear staining.



Immunofluorescence analysis of NIH/3T3 cells using LMAN2L Rabbit polyclonal antibody (STJ11100456) at dilution of 1:200 (40x lens). Blue: DAPI for nuclear staining.



Immunofluorescence analysis of C6 cells using LMAN2L Rabbit polyclonal antibody (STJ11100456) at dilution of 1:200 (40x lens). Blue: DAPI for nuclear staining.



Western blot analysis of extracts of HeLa cells, using LMAN2L antibody (STJ11100456) at 1:1000 dilution. Secondary antibody: HRP Goat Anti-Rabbit IgG (H+L) (STJS000856) at 1:10000 dilution. Lysates/proteins: 25 µg per lane. Blocking buffer: 3% nonfat dry milk in TBST. Detection: ECL Basic Kit. Exposure time: 3s.