

Anti-ADCY10 antibody (1-290) (STJ11100427)

GENERAL INFORMATION

Product Type	Primary antibodies
Applications	WB/ELISA
Host / Source	Rabbit
Reactivity	Human/Mouse

PRODUCT PROPERTIES

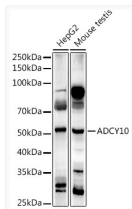
Clonality	Polyclonal
Concentration	Lot specific
Conjugation	Unconjugated
Purification	Affinity purification
Dilution Range	WB:1:500-1:1000 ELISA:Recommended starting concentration is 1 μ g/mL. Please optimize the concentration based on your specific assay requirements.
Formulation	PBS with 0.01% Thimerosal, 50% Glycerol, pH 7.3.
Isotype	IgG
Molecular Weight	Protein Mw: 187kDa Observed Mw: 48kDa
Storage Instruction	Store at -20°C for up to 1 year from the date of receipt, and avoid repeat freeze-thaw cycles.

TARGET INFORMATION

Gene ID	55811
Gene Symbol	ADCY10
UniProt ID	ADCYA_HUMAN
Immunogen Region	1-290
Immunogen Sequence	MNTPKEEFQDWPIVRIAHL PDLIVYGHFSPERPFMDYFD GVLMFVDISGFTAMTEKFSS AMYMDRGAEQLVEILNYHIS AIVEKVLIFGGDILKFAGDA LLALWRVERKQLKNIITVVI KCSLEIHGLFETQEWEEGLD IRVKIGLAAGHISMLVFGDE THSHFLVIGQAVDDVRLAQN MAQMNDVILSPNCWQLCDRS MIEIESVPDQRAVKVNF LKP PPNFNFDEFFTKCTTFMHY
Specificity	Recombinant fusion protein containing a sequence corresponding to amino acids 1-290 of human ADCY10 (NP_060887.2).

ADDITIONAL INFORMATION

Note **STRICTLY FOR FURTHER SCIENTIFIC RESEARCH USE ONLY (RUO). MUST NOT TO BE USED IN DIAGNOSTIC OR THERAPEUTIC APPLICATIONS.**



Western blot analysis of various lysates using ADCY10 Rabbit polyclonal antibody (STJ11100427) at 1:1000 dilution. Secondary antibody: HRP Goat Anti-Rabbit IgG (H+L) (STJS000856) at 1:10000 dilution. Lysates/proteins: 25 μ g per lane. Blocking buffer: 3% nonfat dry milk in TBST. Detection: ECL Basic Kit. Exposure time: 180s.