

Anti-HCAR3 antibody (300-392) (STJ11100354)

GENERAL INFORMATION

Product Type	Primary antibodies
Applications	WB/IHC-P/ELISA
Host / Source	Rabbit
Reactivity	Human/Mouse/Rat

PRODUCT PROPERTIES

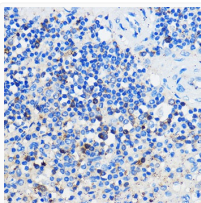
Clonality	Polyclonal
Concentration	Lot specific
Conjugation	Unconjugated
Purification	Affinity purification
Dilution Range	WB:1:500-1:2000 IHC-P:1:50-1:200 ELISA:Recommended starting concentration is 1 µg/mL. Please optimize the concentration based on your specific assay requirements.
Formulation	PBS with 0.01% Thimerosal, 50% Glycerol, pH 7.3.
Isotype	IgG
Molecular Weight	Protein Mw: 44kDa Observed Mw: 44kDa
Storage Instruction	Store at -20°C for up to 1 year from the date of receipt, and avoid repeat freeze-thaw cycles.

TARGET INFORMATION

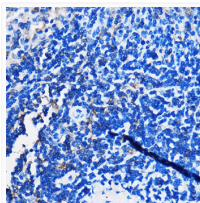
Gene ID	8843
Gene Symbol	HCAR3
UniProt ID	HCAR3_HUMAN
Immunogen Region	300-392
Immunogen Sequence	SFPNFFSTLINRCLQRKITG EPDNNRSTSVELTGDPNKTR GAPEALIANSGEPWSPSYLG PTSNNHSKKGGHCHQEPASLE KQLGCCIE
Specificity	A synthetic peptide corresponding to a sequence within amino acids 300-392 of human HCAR3 (NP_006009.2).

ADDITIONAL INFORMATION

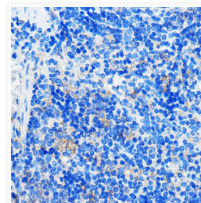
Note **STRICTLY FOR FURTHER SCIENTIFIC RESEARCH USE ONLY (RUO). MUST NOT TO BE USED IN DIAGNOSTIC OR THERAPEUTIC APPLICATIONS.**



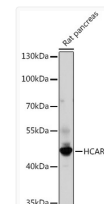
Immunohistochemistry analysis of HCAR3 in paraffin-embedded Human spleen using HCAR3 Rabbit polyclonal antibody (STJ11100354) at dilution of 1:100 (40x lens). Perform microwave antigen retrieval with 10 mM PBS buffer pH 7.2 before commencing with immunohistochemistry staining protocol.



Immunohistochemistry analysis of HCAR3 in paraffin-embedded Rat spleen using HCAR3 Rabbit polyclonal antibody (STJ11100354) at dilution of 1:100 (40x lens). Perform microwave antigen retrieval with 10 mM PBS buffer pH 7.2 before commencing with immunohistochemistry staining protocol.



Immunohistochemistry analysis of HCAR3 in paraffin-embedded Mouse spleen using HCAR3 Rabbit polyclonal antibody (STJ11100354) at dilution of 1:100 (40x lens). Perform microwave antigen retrieval with 10 mM PBS buffer pH 7.2 before commencing with immunohistochemistry staining protocol.



Western blot analysis of lysates from Rat pancreas, using HCAR3 Rabbit polyclonal antibody (STJ11100354) at 1:1000 dilution. Secondary antibody: HRP Goat Anti-Rabbit IgG (H+L) (STJS000856) at 1:10000 dilution. Lysates/proteins: 25 µg per lane. Blocking buffer: 3% nonfat dry milk in TBST. Detection: ECL Basic Kit. Exposure time: 120s.