

Anti-RPS8 antibody (10-100) (STJ11100330)

GENERAL INFORMATION

Product Type	Primary antibodies
Applications	WB/IF/ICC/ELISA
Host / Source	Rabbit
Reactivity	Human/Mouse/Rat

PRODUCT PROPERTIES

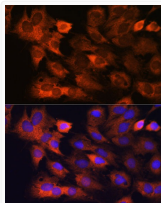
Clonality	Polyclonal
Concentration	Lot specific
Conjugation	Unconjugated
Purification	Affinity purification
Dilution Range	WB:1:500-1:2000 IF/CC:1:50-1:200 ELISA:Recommended starting concentration is 1 Mu g/mL. Please optimize the concentration based on your specific assay requirements.
Formulation	PBS with 0.01% Thimerosal, 50% Glycerol, pH 7.3.
Isotype	IgG
Molecular Weight	Protein Mw: 24kDa Observed Mw: 24kDa
Storage Instruction	Store at -20°C for up to 1 year from the date of receipt, and avoid repeat freeze-thaw cycles.

TARGET INFORMATION

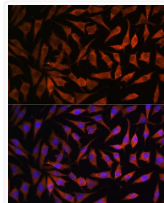
Gene ID	6202
Gene Symbol	RPS8
UniProt ID	RS8_HUMAN
Immunogen Region	10-100
Immunogen Sequence	KRRKTGGKRPYHKKRKYEL GRPAANTKIGPRRIHTVVRV GGNKKYRALRLDVGNFWSWGS ECCTRKTRIIDVVYNASNNE LVRTKTLVKNC
Specificity	Recombinant fusion protein containing a sequence corresponding to amino acids 10-100 of human RPS8 (NP_001003.1).

ADDITIONAL INFORMATION

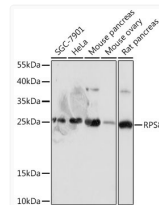
Note STRICTLY FOR FURTHER SCIENTIFIC RESEARCH USE ONLY (RUO). MUST NOT TO BE USED IN DIAGNOSTIC OR THERAPEUTIC APPLICATIONS.



Immunofluorescence analysis of C6 cells using RPS8 Rabbit polyclonal antibody (STJ11100330) at dilution of 1:100. Blue: DAPI for nuclear staining.



Immunofluorescence analysis of L929 cells using RPS8 Rabbit polyclonal antibody (STJ11100330) at dilution of 1:100. Blue: DAPI for nuclear staining.



Western blot analysis of various lysates using RPS8 Rabbit polyclonal antibody (STJ11100330) at 1:1000 dilution. Secondary antibody: HRP Goat Anti-Rabbit IgG (H+L) (STJS000856) at 1:10000 dilution. Lysates/proteins: 25 Mu g per lane. Blocking buffer: 3% nonfat dry milk in TBST. Detection: ECL Basic Kit. Exposure time: 90s.