

## Anti-RBMY1A1 antibody (90-300) (STJ11100329)

### GENERAL INFORMATION

Product Type	Primary antibodies
Applications	IHC-P/IF/ICC/ELISA
Host / Source	Rabbit
Reactivity	Human/Mouse/Rat

### PRODUCT PROPERTIES

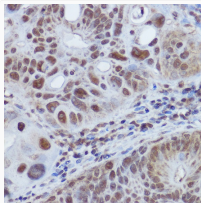
Clonality	Polyclonal
Concentration	Lot specific
Conjugation	Unconjugated
Purification	Affinity purification
Dilution Range	IHC-P:1:50-1:200 IF/ICC:1:50-1:200 ELISA:Recommended starting concentration is 1 µg/mL. Please optimize the concentration based on your specific assay requirements.
Formulation	PBS with 0.01% Thimerosal, 50% Glycerol, pH 7.3.
Isotype	IgG
Molecular Weight	Protein Mw: 56kDa Observed Mw: Refer to figures
Storage Instruction	Store at -20°C for up to 1 year from the date of receipt, and avoid repeat freeze-thaw cycles.

### TARGET INFORMATION

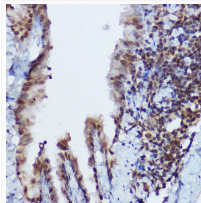
Gene ID	<a href="#">5940</a>
Gene Symbol	<a href="#">RBMY1A1</a>
UniProt ID	<a href="#">RBY1A_HUMAN</a>
Immunogen Region	90-300
Immunogen Sequence	SGGRRRPPASSRNRSPSGSL RSARGSRGGTRGWLP SHEGH LDDGGYTPDLKMSYSRGLIP VKRGPSSRSGGPPPKKSAPS AVARSNSWMG SQGPMSQRRE NYGVPPRRATISSWRNDRMS TRHDGYATNDGNHPSCQETR DYAPPSRGYAYRDNGHSNRD EHSSRGYRNHRSSRETRDYA PPSRGHAYRDYGHSSRDESY SRGYRNRSSR
Specificity	Recombinant fusion protein containing a sequence corresponding to amino acids 90-300 of human RBMY1A1 (NP_005049.1).

### ADDITIONAL INFORMATION

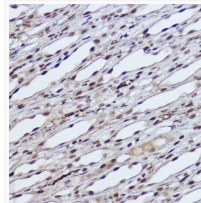
Note **STRICTLY FOR FURTHER SCIENTIFIC RESEARCH USE ONLY (RUO). MUST NOT TO BE USED IN DIAGNOSTIC OR THERAPEUTIC APPLICATIONS.**



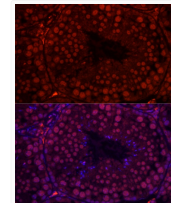
Immunohistochemistry analysis of paraffin-embedded human colon carcinoma using RBMY1A1 rabbit polyclonal antibody (STJ11100329) at dilution of 1:100 (40x lens). Perform high pressure antigen retrieval with 10 mM citrate buffer pH 6.0 before commencing with immunohistochemistry staining protocol.



Immunohistochemistry analysis of paraffin-embedded mouse lung using RBMY1A1 rabbit polyclonal antibody (STJ11100329) at dilution of 1:100 (40x lens). Perform high pressure antigen retrieval with 10 mM citrate buffer pH 6.0 before commencing with immunohistochemistry staining protocol.



Immunohistochemistry analysis of paraffin-embedded rat kidney using RBMY1A1 rabbit polyclonal antibody (STJ11100329) at dilution of 1:100 (40x lens). Perform high pressure antigen retrieval with 10 mM citrate buffer pH 6.0 before commencing with immunohistochemistry staining protocol.



Immunofluorescence analysis of mouse testis cells using RBMY1A1 rabbit polyclonal antibody (STJ11100329) at dilution of 1:100 (40x lens). Blue: DAPI for nuclear staining.