

Anti-TPX2 antibody (1-250) (STJ11100283)

GENERAL INFORMATION

Product Type	Primary antibodies
Applications	WB/IHC-P/IF/ICC/ELISA
Host / Source	Rabbit
Reactivity	Human/Rat

PRODUCT PROPERTIES

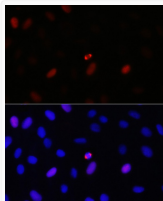
Clonality	Polyclonal
Concentration	Lot specific
Conjugation	Unconjugated
Purification	Affinity purification
Dilution Range	WB:1:500-1:1000 IHC-P:1:50-1:200 IF/ICC:1:50-1:200 ELISA:Recommended starting concentration is 1 Mu g/mL. Please optimize the concentration based on your specific assay requirements.
Formulation	PBS with 0.05% Proclin300, 50% Glycerol, pH 7.3.
Isotype	IgG
Molecular Weight	Protein Mw: 86kDa Observed Mw: 105kDa
Storage Instruction	Store at -20°C for up to 1 year from the date of receipt, and avoid repeat freeze-thaw cycles.

TARGET INFORMATION

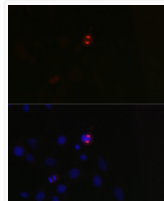
Gene ID	22974
Gene Symbol	TPX2
UniProt ID	TPX2_HUMAN
Immunogen Region	1-250
Immunogen Sequence	MSQVKSSYSYDAPSDFINFS SLDDEGDTQNIDSWFEEKAN LENKLLGKNGTGGLFQGKTP LRKANLQQAIVTPLKPDVNT YYKEAEKENLVEQSIPSNAC SSLEVEAAISRKTPAQQR SLRLSAQKDLEQKEKHHVKM KAKRCATPVIIDEILPSKMM KVSNNKKKPEEEGSAHQDTA EKNASSPEKAKGRHTVPCMP PAKQKFLKSTEEQLEKSMK MQQEVVEMRKKNEEFKLA
Specificity	Recombinant fusion protein containing a sequence corresponding to amino acids 1-250 of human TPX2 (NP_036244.2).

ADDITIONAL INFORMATION

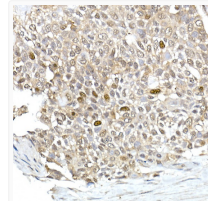
Note **STRICTLY FOR FURTHER SCIENTIFIC RESEARCH USE ONLY (RUO). MUST NOT TO BE USED IN DIAGNOSTIC OR THERAPEUTIC APPLICATIONS.**



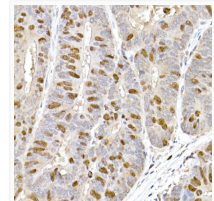
Immunofluorescence analysis of U-2 OS cells using TPX2 Rabbit polyclonal antibody (STJ11100283) at dilution of 1:100 (40x lens). Blue: DAPI for nuclear staining.



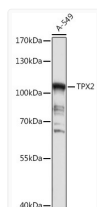
Immunofluorescence analysis of C6 cells using TPX2 Rabbit polyclonal antibody (STJ11100283) at dilution of 1:100 (40x lens). Blue: DAPI for nuclear staining.



Immunohistochemistry analysis of paraffin-embedded human esophageal cancer using TPX2 Rabbit polyclonal antibody (STJ11100283) at dilution of 1:100 (40x lens). Perform high pressure antigen retrieval with 10 mM citrate buffer pH 6.0 before commencing with immunohistochemistry staining protocol.



Immunohistochemistry analysis of paraffin-embedded human colon carcinoma using TPX2 Rabbit polyclonal antibody (STJ11100283) at dilution of 1:100 (40x lens). Perform high pressure antigen retrieval with 10 mM citrate buffer pH 6.0 before commencing with immunohistochemistry staining protocol.



Western blot analysis of extracts of A-549 cells, using TPX2 antibody (STJ11100283) at 1:1000 dilution. Secondary antibody: HRP Goat Anti-Rabbit IgG (H+L) (STJS000856) at 1:10000 dilution. Lysates/proteins: 25 Mu g per lane. Blocking buffer: 3% nonfat dry milk in TBST. Detection: ECL Basic Kit. Exposure time: 30s.