

Anti-JAK1 antibody (30-300) (STJ11100279)

GENERAL INFORMATION

Product Type	Primary antibodies
Applications	WB/IF/ICC/ELISA
Host / Source	Rabbit
Reactivity	Human/Mouse/Rat

PRODUCT PROPERTIES

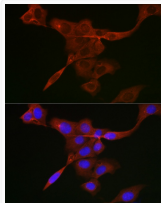
Clonality	Polyclonal
Concentration	Lot specific
Conjugation	Unconjugated
Purification	Affinity purification
Dilution Range	WB:1:1000-1:5000 IF/CC:1:100-1:500 ELISA:Recommended starting concentration is 1 μ g/mL. Please optimize the concentration based on your specific assay requirements.
Formulation	PBS with 0.05% Proclin300, 50% Glycerol, pH 7.3.
Isotype	IgG
Molecular Weight	Protein Mw: 133kDa Observed Mw: 130kDa
Storage Instruction	Store at -20°C for up to 1 year from the date of receipt, and avoid repeat freeze-thaw cycles.

TARGET INFORMATION

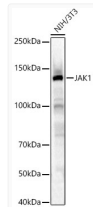
Gene ID	3716
Gene Symbol	JAK1
UniProt ID	JAK1_HUMAN
Immunogen Region	30-300
Immunogen Sequence	EAPEPGVEVIFYLSDREPLR LGSGEYTAEELCIRAAQACR ISPLCHNLFALYDENTKLWY APNRTITVDDKMSLRLLHYRM RFYFTNWHGTNDNEQSVWRH SPKKQKNGYEKKIPDATPL LDASSLEYLFAQQQYDLVKC LAPIRDPKTEQDGHDIENEC LGMVLAISHYAMMKMQLP ELPKDISYKRYIPETLNKSI RQRNLLTRMRINNVFKDFLK EFNKKTICDSSVSTHDLKV
Specificity	A synthetic peptide corresponding to a sequence within amino acids 30-300 of human JAK1 (NP_002218.2).

ADDITIONAL INFORMATION

Note **STRICTLY FOR FURTHER SCIENTIFIC RESEARCH USE ONLY (RUO). MUST NOT TO BE USED IN DIAGNOSTIC OR THERAPEUTIC APPLICATIONS.**



Immunofluorescence analysis of U2OS cells using JAK1 Rabbit polyclonal antibody (STJ11100279) at dilution of 1:300 (40x lens). Blue: DAPI for nuclear staining.



Western blot analysis of NIH/3T3, using JAK1 Rabbit polyclonal antibody (STJ11100279) at 1:2000 dilution. Secondary antibody: HRP Goat Anti-Rabbit IgG (H+L) (STJS000856) at 1:10000 dilution. Lysates/proteins: 25 μ g per lane. Blocking buffer: 3% nonfat dry milk in TBST. Detection: ECL Basic Kit. Exposure time: 90s.