

Anti-TET3 antibody (136-265) (STJ11100275)

GENERAL INFORMATION

| | |
|---------------|--------------------|
| Product Type | Primary antibodies |
| Applications | WB/IF/ICC/ELISA |
| Host / Source | Rabbit |
| Reactivity | Human/Mouse |

PRODUCT PROPERTIES

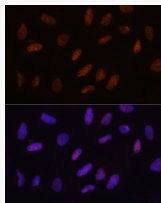
| | |
|---------------------|--|
| Clonality | Polyclonal |
| Concentration | Lot specific |
| Conjugation | Unconjugated |
| Purification | Affinity purification |
| Dilution Range | WB:1:500-1:2000 IF/CC:1:50-1:200 ELISA:Recommended starting concentration is 1 Mu g/mL. Please optimize the concentration based on your specific assay requirements. |
| Formulation | PBS with 0.01% Thimerosal, 50% Glycerol, pH 7.3. |
| Isotype | IgG |
| Molecular Weight | Protein Mw: 194kDa Observed Mw: 179kDa |
| Storage Instruction | Store at -20°C for up to 1 year from the date of receipt, and avoid repeat freeze-thaw cycles. |

TARGET INFORMATION

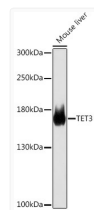
| | |
|--------------------|---|
| Gene ID | 200424 |
| Gene Symbol | TET3 |
| UniProt ID | TET3_HUMAN |
| Immunogen Region | 136-265 |
| Immunogen Sequence | MDSGPVYHGDSTRQLSASGVP VNGAREPAGPSLLGTGGPWR VDQKPDWEAAPGPAHTARLE DAHDLVAFSAVAEAVSSYGA LSTRLYETFNREMSREAGNN SRGPRPGPEGCSAGSEDLDT LQTALALARH |
| Specificity | Recombinant fusion protein containing a sequence corresponding to amino acids 136-265 of TET3 (NP_001274420.1). |

ADDITIONAL INFORMATION

Note STRICTLY FOR FURTHER SCIENTIFIC RESEARCH USE ONLY (RUO). MUST NOT TO BE USED IN DIAGNOSTIC OR THERAPEUTIC APPLICATIONS.



Immunofluorescence analysis of U2OS cells using TET3 Rabbit polyclonal antibody (STJ11100275) at dilution of 1:100. Secondary antibody: Cy3 Goat Anti-Rabbit IgG (H+L) at 1:500 dilution. Blue: DAPI for nuclear staining.



Western blot analysis of lysates from Mouse liver, using TET3 Rabbit polyclonal antibody (STJ11100275) at 1:1000 dilution. Secondary antibody: HRP Goat Anti-Rabbit IgG (H+L) (STJS000856) at 1:10000 dilution. Lysates/proteins: 25 Mu g per lane. Blocking buffer: 3% nonfat dry milk in TBST. Detection: ECL Basic Kit. Exposure time: 1s.