

Anti-MEIS1 antibody (300-390) (STJ11100229)

GENERAL INFORMATION

Product Type	Primary antibodies
Applications	WB/IF/ICC/ELISA
Host / Source	Rabbit
Reactivity	Human/Mouse/Rat

PRODUCT PROPERTIES

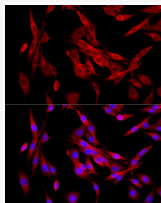
Clonality	Polyclonal
Concentration	Lot specific
Conjugation	Unconjugated
Purification	Affinity purification
Dilution Range	WB:1:500-1:1000 IF/CC:1:50-1:200 ELISA:Recommended starting concentration is 1 μ g/mL. Please optimize the concentration based on your specific assay requirements.
Formulation	PBS with 0.05% Proclin300, 50% Glycerol, pH 7.3.
Isotype	IgG
Molecular Weight	Protein Mw: 43kDa Observed Mw: 51kDa
Storage Instruction	Store at -20°C for up to 1 year from the date of receipt, and avoid repeat freeze-thaw cycles.

TARGET INFORMATION

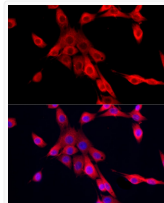
Gene ID	4211
Gene Symbol	MEIS1
UniProt ID	MEIS1_HUMAN
Immunogen Region	300-390
Immunogen Sequence	PSEEQKKQLAQDTGLTILQV NNWFNARRRIVQPMIDQSN RAVSQGTPYNPDGQPMGGFV MDGQQHMGIRAPGPMMSGMGM NMGMEGQWHYM
Specificity	A synthetic peptide corresponding to a sequence within amino acids 300-390 of human MEIS1 (NP_002389.1).

ADDITIONAL INFORMATION

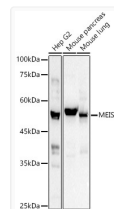
Note STRICTLY FOR FURTHER SCIENTIFIC RESEARCH USE ONLY (RUO). MUST NOT TO BE USED IN DIAGNOSTIC OR THERAPEUTIC APPLICATIONS.



Immunofluorescence analysis of PC-12 cells using MEIS1 Rabbit polyclonal antibody (STJ11100229) at dilution of 1:100 (40x lens). Blue: DAPI for nuclear staining.



Immunofluorescence analysis of NIH/3T3 cells using MEIS1 Rabbit polyclonal antibody (STJ11100229) at dilution of 1:100 (40x lens). Blue: DAPI for nuclear staining.



Western blot analysis of various lysates using MEIS1 Rabbit polyclonal antibody (STJ11100229) at 1:900 dilution. Secondary antibody:HRP Goat Anti-Rabbit IgG (H+L) (STJS000856) at 1:10000 dilution. Lysates/ proteins: 25 μ g per lane. Blocking buffer: 3 % nonfat dry milk in TBST. Detection:ECL Basic Kit. Exposure time: 20s.