

Anti-MRPL55 antibody (1-128) (STJ11100199)

GENERAL INFORMATION

Product Type	Primary antibodies
Applications	WB/ELISA
Host / Source	Rabbit
Reactivity	Human

PRODUCT PROPERTIES

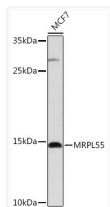
Clonality	Polyclonal
Concentration	Lot specific
Conjugation	Unconjugated
Purification	Affinity purification
Dilution Range	WB:1:500-1:2000 ELISA:Recommended starting concentration is 1 µg/mL. Please optimize the concentration based on your specific assay requirements.
Formulation	PBS with 0.01% Thimerosal, 50% Glycerol, pH 7.3.
Isotype	IgG
Molecular Weight	Protein Mw: 15kDa Observed Mw: 15kDa
Storage Instruction	Store at -20°C for up to 1 year from the date of receipt, and avoid repeat freeze-thaw cycles.

TARGET INFORMATION

Gene ID	128308
Gene Symbol	MRPL55
UniProt ID	RM55_HUMAN
Immunogen Region	1-128
Immunogen Sequence	MAAVGSLGRLRQSTVKATG PALRRLHTSSWRADSSRASL TRVHRQAYARLYPVLLVKQD GSTIHIRYREPRRLAMPID LDTLSPEERRARLRKREAQL QSRKEYEQELSDDLHVERYR QFWTRTKK
Specificity	Recombinant fusion protein containing a sequence corresponding to amino acids 1-128 of human MRPL55 (NP_001308213.1).

ADDITIONAL INFORMATION

Note STRICTLY FOR FURTHER SCIENTIFIC RESEARCH USE ONLY (RUO). MUST NOT TO BE USED IN DIAGNOSTIC OR THERAPEUTIC APPLICATIONS.



Western blot analysis of lysates from MCF7 cells, using MRPL55 Rabbit polyclonal antibody (STJ11100199) at 1:1000 dilution. Secondary antibody: HRP Goat Anti-Rabbit IgG (H+L) (STJS000856) at 1:10000 dilution. Lysates/proteins: 25 µg per lane. Blocking buffer: 3% nonfat dry milk in TBST. Detection: ECL Basic Kit. Exposure time: 1s.