

Anti-MRPL38 antibody (35-380) (STJ11100196)

GENERAL INFORMATION

Product Type	Primary antibodies
Applications	WB/IHC-P/ELISA
Host / Source	Rabbit
Reactivity	Human/Mouse/Rat

PRODUCT PROPERTIES

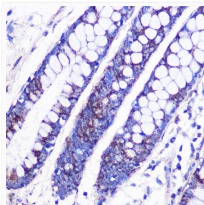
Clonality	Polyclonal
Concentration	Lot specific
Conjugation	Unconjugated
Purification	Affinity purification
Dilution Range	WB:1:500-1:2000 IHC-P:1:50-1:200 ELISA:Recommended starting concentration is 1 µg/mL. Please optimize the concentration based on your specific assay requirements.
Formulation	PBS with 0.01% Thimerosal, 50% Glycerol, pH 7.3.
Isotype	IgG
Molecular Weight	Protein Mw: 45kDa Observed Mw: 44kDa
Storage Instruction	Store at -20°C for up to 1 year from the date of receipt, and avoid repeat freeze-thaw cycles.

TARGET INFORMATION

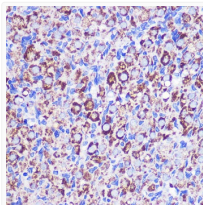
Gene ID	64978
Gene Symbol	MRPL38
UniProt ID	RM38_HUMAN
Immunogen Region	35-380
Immunogen Sequence	MPNSDIDLNSLERLEKYRSF DRYRRRAEQEAQAPHWWRTY REYFGEKTDPKKEKIDIGLPP PKVSRTOQLLERKQAIQLR ANVEEERARLRASVPLDA VRAEWERTCGPYHKQRLAEY YGLYRDLFHGATFVPRVPLH VAYAVGEDDLMPVYCGNEVT PTEAAQAPEVTYEAEEGSLW TLLLTSLDGHLLPEDAEYLH WLLTNIPGNRVAEGQVTCPY LPPFPARGSGIHRLAFLF
Specificity	Recombinant fusion protein containing a sequence corresponding to amino acids 35-380 of human MRPL38 (NP_115867.2).

ADDITIONAL INFORMATION

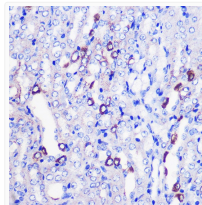
Note STRICTLY FOR FURTHER SCIENTIFIC RESEARCH USE ONLY (RUO). MUST NOT TO BE USED IN DIAGNOSTIC OR THERAPEUTIC APPLICATIONS.



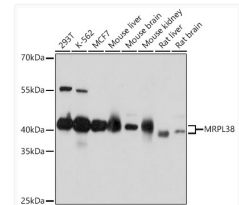
Immunohistochemistry analysis of MRPL38 in paraffin-embedded Human colon using MRPL38 Rabbit polyclonal antibody (STJ11100196) at dilution of 1:100 (40x lens). Perform microwave antigen retrieval with 10 mM PBS buffer pH 7. 2 before commencing with immunohistochemistry staining protocol.



Immunohistochemistry analysis of MRPL38 in paraffin-embedded Rat ovary using MRPL38 Rabbit polyclonal antibody (STJ11100196) at dilution of 1:100 (40x lens). Perform microwave antigen retrieval with 10 mM PBS buffer pH 7. 2 before commencing with immunohistochemistry staining protocol.



Immunohistochemistry analysis of MRPL38 in paraffin-embedded Mouse kidney using MRPL38 Rabbit polyclonal antibody (STJ11100196) at dilution of 1:100 (40x lens). Perform microwave antigen retrieval with 10 mM PBS buffer pH 7. 2 before commencing with immunohistochemistry staining protocol.



Western blot analysis of various lysates using MRPL38 Rabbit polyclonal antibody (STJ11100196) at 1:1000 dilution. Secondary antibody: HRP Goat Anti-Rabbit IgG (H+L) (STJS000856) at 1:10000 dilution. Lysates/proteins: 25 µg per lane. Blocking buffer: 3% nonfat dry milk in TBST. Detection: ECL Basic Kit. Exposure time: 5s.