

Anti-SETD1A antibody (258-458 aa) (STJ11100188)

GENERAL INFORMATION

Product Type	Primary antibodies
Applications	WB/ELISA
Host / Source	Rabbit
Reactivity	Human/Mouse

PRODUCT PROPERTIES

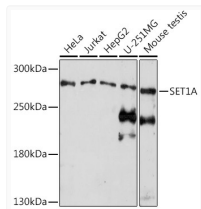
Clonality	Polyclonal
Concentration	Lot specific
Conjugation	Unconjugated
Purification	Affinity purification
Dilution Range	WB:1:500-1:2000 ELISA:Recommended starting concentration is 1 µg/mL. Please optimize the concentration based on your specific assay requirements.
Formulation	PBS with 0.01% Thimerosal, 50% Glycerol, pH 7.3.
Isotype	IgG
Molecular Weight	Protein Mw: 186kDa Observed Mw: 300kDa
Storage Instruction	Store at -20°C for up to 1 year from the date of receipt, and avoid repeat freeze-thaw cycles.

TARGET INFORMATION

Gene ID	9739
Gene Symbol	SETD1A
UniProt ID	SET1A_HUMAN
Immunogen Region	258-458 aa
Immunogen Sequence	SSFGQFTPQSSQGTPTYTSRG STPYSQDSAYSSSTTSTSFK PRRSENSYQDAFSRRRHFSAS SASTTASTAIAATTAATASS SASSSSLSSSSSSSSSSSSSS QFRSSDANYPAYYESWNRVQ RHTSYPPRRATREEPPGAPF AENTAERFPSPYTSYLPPEP SRPTDQDYRPPASEAPPPPEP PEPGGGGGGGGSPEREVEVR TSPRPASPARSGSPAPETTN ESVPFAQHSSLDSRIEMLL
Specificity	Recombinant fusion protein containing a sequence corresponding to amino acids 258-458 of human SET1A. (O15047).

ADDITIONAL INFORMATION

Note STRICTLY FOR FURTHER SCIENTIFIC RESEARCH USE ONLY (RUO). MUST NOT TO BE USED IN DIAGNOSTIC OR THERAPEUTIC APPLICATIONS.



Western blot analysis of various lysates using SET1A Rabbit polyclonal antibody (STJ11100188) at 1:1000 dilution. Secondary antibody: HRP Goat Anti-Rabbit IgG (H+L) (STJS000856) at 1:10000 dilution. Lysates/proteins: 25 µg per lane. Blocking buffer: 3% nonfat dry milk in TBST. Detection: ECL Enhanced Kit. Exposure time: 5min.