

Anti-TBC1D4 antibody (1059-1298) (STJ11100173)

GENERAL INFORMATION

Product Type	Primary antibodies
Applications	WB/IF/ICC/ELISA
Host / Source	Rabbit
Reactivity	Mouse/Rat

PRODUCT PROPERTIES

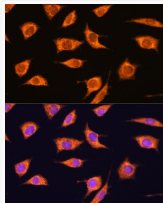
Clonality	Polyclonal
Concentration	Lot specific
Conjugation	Unconjugated
Purification	Affinity purification
Dilution Range	WB:1:500-1:2000 IF/CC:1:50-1:200 ELISA:Recommended starting concentration is 1 Mu g/mL. Please optimize the concentration based on your specific assay requirements.
Formulation	PBS with 0.01% Thimerosal, 50% Glycerol, pH 7.3.
Isotype	IgG
Molecular Weight	Protein Mw: 147kDa Observed Mw: 160kDa
Storage Instruction	Store at -20°C for up to 1 year from the date of receipt, and avoid repeat freeze-thaw cycles.

TARGET INFORMATION

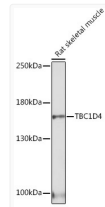
Gene ID	9882
Gene Symbol	TBC1D4
UniProt ID	TBCD4_HUMAN
Immunogen Region	1059-1298
Immunogen Sequence	SRLLHDYHRDLYNHLEENEI SPSLYAAPWFLTLFASQFSL GFVARVFDIIFLQGTVEVFK VALSLLSSQETLIMECESFE NIVEFLKNTLPDMNTSEMEK IITQVFEMDISKQLHAYEVE YHVLQDELQESSYSCEDSET LEKLERANSQLKRONMDLLE KLQVAHTKIQALESNLENLL TRETMMKSLIRTLQEKMAY QKTVEQLRKLLPADALVNCD LLLRDLNCPNPNNAKIGNK
Specificity	Recombinant fusion protein containing a sequence corresponding to amino acids 1059-1298 of human TBC1D4 (NP_055647.2).

ADDITIONAL INFORMATION

Note **STRICTLY FOR FURTHER SCIENTIFIC RESEARCH USE ONLY (RUO). MUST NOT TO BE USED IN DIAGNOSTIC OR THERAPEUTIC APPLICATIONS.**



Immunofluorescence analysis of L929 cells using TBC1D4 Rabbit polyclonal antibody (STJ11100173) at dilution of 1:100. Secondary antibody: Cy3 Goat Anti-Rabbit IgG (H+L) at 1:500 dilution. Blue: DAPI for nuclear staining.



Western blot analysis of lysates from Rat skeletal muscle, using TBC1D4 Rabbit polyclonal antibody (STJ11100173) at 1:1000 dilution. Secondary antibody: HRP Goat Anti-Rabbit IgG (H+L) (STJS000856) at 1:10000 dilution. Lysates/proteins: 25 Mu g per lane. Blocking buffer: 3% nonfat dry milk in TBST. Detection: ECL Basic Kit. Exposure time: 30s.