

Anti-ABCD3 antibody (340-475) (STJ11100138)

GENERAL INFORMATION

Product Type	Primary antibodies
Applications	WB/IHC-P/IF/ICC/ELISA
Host / Source	Rabbit
Reactivity	Human/Mouse/Rat

PRODUCT PROPERTIES

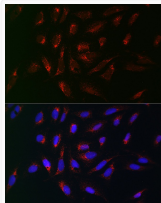
Clonality	Polyclonal
Concentration	Lot specific
Conjugation	Unconjugated
Purification	Affinity purification
Dilution Range	WB:1:500-1:1000 IHC-P:1:50-1:200 IF/ICC:1:50-1:200 ELISA:Recommended starting concentration is 1 Mu g/mL. Please optimize the concentration based on your specific assay requirements.
Formulation	PBS with 0.09% Sodium Azide, 50% Glycerol, pH7.3.
Isotype	IgG
Molecular Weight	Protein Mw: 75kDa Observed Mw: 70kDa
Storage Instruction	Store at -20°C for up to 1 year from the date of receipt, and avoid repeat freeze-thaw cycles.

TARGET INFORMATION

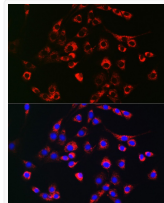
Gene ID	5825
Gene Symbol	ABCD3
UniProt ID	ABCD3_HUMAN
Immunogen Region	340-475
Immunogen Sequence	LSHPRHLKSTHSELLEDYYQ SGRMLLRMSQALGRIVLAGR EMTRLAGFTARITELMQVLK DLNHGKYERTMVSQQEKGIE GVQVIPLIPGAGEIIADNI IKFDHVPLATPNGDVLIRDL NFEVRSGANVLCGPN
Specificity	Recombinant fusion protein containing a sequence corresponding to amino acids 340-475 of human PMP70/ABCD3 (NP_002849.1).

ADDITIONAL INFORMATION

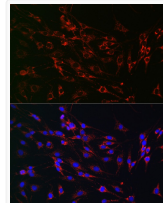
Note **STRICTLY FOR FURTHER SCIENTIFIC RESEARCH USE ONLY (RUO). MUST NOT TO BE USED IN DIAGNOSTIC OR THERAPEUTIC APPLICATIONS.**



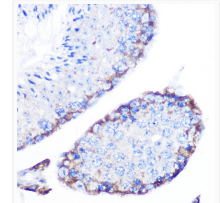
Immunofluorescence analysis of U-2 OS cells using PMP70/PMP70/ABCD3 Rabbit polyclonal antibody (STJ11100138) at dilution of 1:100 (40x lens). Secondary antibody: Cy3 Goat Anti-Rabbit IgG (H+L) at 1:500 dilution. Blue: DAPI for nuclear staining.



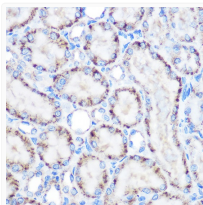
Immunofluorescence analysis of NIH-3T3 cells using PMP70/PMP70/ABCD3 Rabbit polyclonal antibody (STJ11100138) at dilution of 1:100 (40x lens). Secondary antibody: Cy3 Goat Anti-Rabbit IgG (H+L) at 1:500 dilution. Blue: DAPI for nuclear staining.



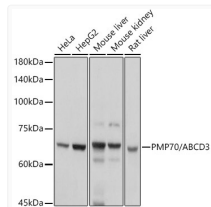
Immunofluorescence analysis of C6 cells using PMP70/PMP70/ABCD3 Rabbit polyclonal antibody (STJ11100138) at dilution of 1:100 (40x lens). Secondary antibody: Cy3 Goat Anti-Rabbit IgG (H+L) at 1:500 dilution. Blue: DAPI for nuclear staining.



Immunohistochemistry analysis of PMP70/ABCD3 in paraffin-embedded mouse testis using PMP70/ABCD3 Rabbit polyclonal antibody (STJ11100138) at dilution of 1:100 (40x lens). Perform microwave antigen retrieval with 10 mM Tris/EDTA buffer pH 9.0 before commencing with immunohistochemistry staining protocol.



Immunohistochemistry analysis of PMP70/ABCD3 in paraffin-embedded rat kidney using PMP70/ABCD3 Rabbit polyclonal antibody (STJ11100138) at dilution of 1:100 (40x lens). Perform microwave antigen retrieval with 10 mM Tris/EDTA buffer pH 9.0 before commencing with immunohistochemistry staining protocol.



Western blot analysis of various lysates using PMP70/ABCD3 Rabbit polyclonal antibody (STJ11100138) at 1:1000 dilution. Secondary antibody: HRP Goat Anti-Rabbit IgG (H+L) (STJS000856) at 1:10000 dilution. Lysates/proteins: 25 Mu g per lane. Blocking buffer: 3% nonfat dry milk in TBST. Detection: ECL Basic Kit. Exposure time: 1s.