

Anti-UBB antibody (STJ11100129)

GENERAL INFORMATION

Product Type	Primary antibodies
Applications	DB/ELISA
Host / Source	Rabbit
Reactivity	Human/Mouse/Rat/Other

PRODUCT PROPERTIES

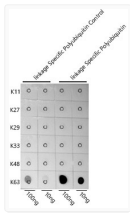
Clonality	Polyclonal
Concentration	Lot specific
Conjugation	Unconjugated
Purification	Affinity purification
Dilution Range	DB:1:500-1:1000 ELISA: Recommended starting concentration is 1 µg/mL. Please optimize the concentration based on your specific assay requirements.
Formulation	PBS with 0.05% Proclin300, 50% Glycerol, pH 7.3.
Isotype	IgG
Molecular Weight	15-200kDa
Storage Instruction	Store at -20°C for up to 1 year from the date of receipt, and avoid repeat freeze-thaw cycles.

TARGET INFORMATION

Specificity	A synthetic peptide corresponding to a sequence containing polyubiquitinated protein (K63 linkage).
-------------	---

ADDITIONAL INFORMATION

Note	STRICTLY FOR FURTHER SCIENTIFIC RESEARCH USE ONLY (RUO). MUST NOT TO BE USED IN DIAGNOSTIC OR THERAPEUTIC APPLICATIONS.
------	---



Dot-blot analysis of all sorts of peptides using K63-linkage Specific Polyubiquitin antibody (STJ11100129) at 1:1000 dilution.