

Anti-RAB11FIP5 antibody (354-653) (STJ11100112)

GENERAL INFORMATION

Product Type	Primary antibodies
Applications	WB/IF/ICC/ELISA
Host / Source	Rabbit
Reactivity	Human/Mouse/Rat

PRODUCT PROPERTIES

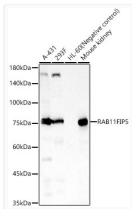
Clonality	Polyclonal
Concentration	Lot specific
Conjugation	Unconjugated
Purification	Affinity purification
Dilution Range	WB:1:500-1:1000 IF/CC:1:50-1:200 ELISA:Recommended starting concentration is 1 Mu g/mL. Please optimize the concentration based on your specific assay requirements.
Formulation	PBS with 0.05% Proclin300, 50% Glycerol, pH 7.3.
Isotype	IgG
Molecular Weight	Protein Mw: 70kDa Observed Mw: 70-90kDa
Storage Instruction	Store at -20°C for up to 1 year from the date of receipt, and avoid repeat freeze-thaw cycles.

TARGET INFORMATION

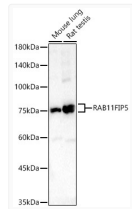
Gene ID	26056
Gene Symbol	RAB11FIP5
UniProt ID	RFIP5_HUMAN
Immunogen Region	354-653
Immunogen Sequence	HRSSISGSLPSSGSLQAVSS RFSEEGPRSTDDTWPRGSRS NSSSEAVLGQEELSAQAKVL APGASHPGEEEGARLPEGKP VQVATPIVASSEAVAKEGA RKEERKPRMGLFHHHHGGLS RSELGRRSSLGEKGGPILGA SPHHSSSGEEKAKSSWFGLR EAKDPTQKPSHPVKPLSAA PVEGSPDRKQSRSSLSIALS SGLEKLTVTSGSIQPVTA PQAGQMVDTKRLKDSAVLD
Specificity	Recombinant fusion protein containing a sequence corresponding to amino acids 354-653 of human RAB11FIP5 (NP_056285.1).

ADDITIONAL INFORMATION

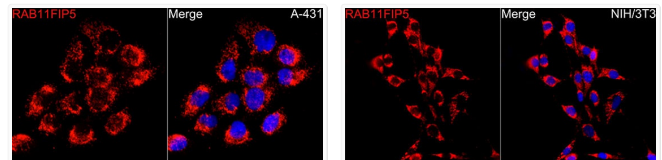
Note STRICTLY FOR FURTHER SCIENTIFIC RESEARCH USE ONLY (RUO). MUST NOT TO BE USED IN DIAGNOSTIC OR THERAPEUTIC APPLICATIONS.



Western blot analysis of various lysates, using RAB11FIP5 rabbit polyclonal antibody (STJ11100112) at 1:800 dilution. Secondary antibody: HRP Goat Anti-rabbit IgG (H+L) (STJS000856) at 1:10000 dilution. Lysates/proteins: 25 Mu g per lane. Blocking buffer: 3% non-fat dry milk in TBST. Detection: ECL Basic Kit. Exposure time: 60s.



Western blot analysis of various lysates, using RAB11FIP5 rabbit polyclonal antibody (STJ11100112) at 1:800 dilution. Secondary antibody: HRP Goat Anti-rabbit IgG (H+L) (STJS000856) at 1:10000 dilution. Lysates/proteins: 25 Mu g per lane. Blocking buffer: 3% non-fat dry milk in TBST. Detection: ECL Basic Kit. Exposure time: 180s.



Immunofluorescence analysis of A-431 cells using RAB11FIP5 rabbit polyclonal antibody (STJ11100112) at dilution of 1:50 (40x lens). Blue: DAPI for nuclear staining.

Immunofluorescence analysis of NIH/3T3 cells using RAB11FIP5 rabbit polyclonal antibody (STJ11100112) at dilution of 1:50 (40x lens). Blue: DAPI for nuclear staining.