

Anti-CDH1 antibody (373-622) [S5MM] (STJ11100105)

GENERAL INFORMATION

Product Type	Primary antibodies
Applications	WB/IF/ICC/ELISA
Host / Source	Mouse
Reactivity	Human/Mouse

PRODUCT PROPERTIES

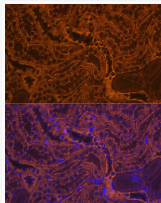
Clonality	Monoclonal
Concentration	Lot specific
Conjugation	Unconjugated
Purification	Affinity purification
Dilution Range	WB:1:700-1:4200 IF/CC:1:100-1:2000 ELISA:Recommended starting concentration is 1 Mu g/mL. Please optimize the concentration based on your specific assay requirements.
Formulation	PBS with 0.05% Proclin300, 50% Glycerol, pH 7.3.
Isotype	IgG2bk
Molecular Weight	Protein Mw: 97kDa Observed Mw: 135kDa
Storage Instruction	Store at -20°C for up to 1 year from the date of receipt, and avoid repeat freeze-thaw cycles.

TARGET INFORMATION

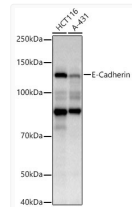
Gene ID	999
Gene Symbol	CDH1
UniProt ID	CADH1_HUMAN
Immunogen Region	373-622
Immunogen Sequence	PIFNPTTYKGVPEANVV ITTLKVTADAPNTPAWEAV YLINDDGGQFVVTNPNVNDGILKTAKGLDFEAKQYIL HVAVTNVVPFEVSLTTSTAT VTVDVLDVNEAIFVPEKRVEVSEDFGVGQEITSYTAQE PDTFMEQKITYRIWRDTANW LEINPDTGAISTRAELDRED FEHVKNSTYALIIATDNGS PVATGTGTLILLSDVNDNA PIPEPRTIFFCERNPKPQV
Specificity	Recombinant fusion protein containing a sequence corresponding to amino acids 373-622 of human E-Cadherin (P12830).

ADDITIONAL INFORMATION

Note STRICTLY FOR FURTHER SCIENTIFIC RESEARCH USE ONLY (RUO). MUST NOT TO BE USED IN DIAGNOSTIC OR THERAPEUTIC APPLICATIONS.



Immunofluorescence analysis of paraffin-embedded mouse kidney using E-Cadherin Mouse monoclonal antibody (STJ11100105) at dilution of 1:100 (40x lens). Blue: DAPI for nuclear staining. Perform high pressure antigen retrieval with 0.01 M citrate buffer (pH 6.0) prior to IF staining.



Western blot analysis of various lysates using E-Cadherin Mouse monoclonal antibody (STJ11100105) at 1:700 dilution. Secondary antibody: HRP Goat Anti-Mouse IgG (H+L) at 1:10000 dilution. Lysates/proteins: 25 Mu g per lane. Blocking buffer: 3% nonfat dry milk in TBST. Detection: ECL Basic Kit. Exposure time: 10s.