

Anti-TUBB3 antibody (40-260) [S2MM] (STJ11100102)

GENERAL INFORMATION

Product Type	Primary antibodies
Applications	WB/IHC-P/IF/ICC/ELISA
Host / Source	Mouse
Reactivity	Human/Mouse/Rat

PRODUCT PROPERTIES

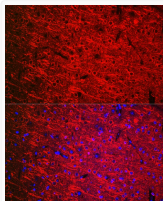
Clonality	Monoclonal
Concentration	Lot specific
Conjugation	Unconjugated
Purification	Affinity purification
Dilution Range	WB:1:1000-1:6000 IHC-P:1:1000-1:10000 IF/CC:1:50-1:200 ELISA:Recommended starting concentration is 1 Mu g/mL. Please optimize the concentration based on your specific assay requirements.
Formulation	PBS with 0.05% Proclin300, 50% Glycerol, pH 7.3.
Isotype	IgG2bk
Molecular Weight	Protein Mw: 50kDa Observed Mw:
Storage Instruction	Store at -20°C for up to 1 year from the date of receipt, and avoid repeat freeze-thaw cycles.

TARGET INFORMATION

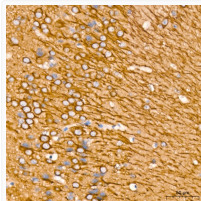
Gene ID	10381
Gene Symbol	TUBB3
UniProt ID	TBB3_HUMAN
Immunogen Region	40-260
Immunogen Sequence	SDLQLERISVYYNEASSHKY VPRAILVDLEPGTMDSVRSG AFGHLFRPDNFIGQSGAGN NWAKGHYTEGAELVDSVLDV VRKECENCDCLOGFQLTHSL GGGTGSGMGTLISKVREEY PDRIMNTFSVSPKVSQDTV VEPYNATLSIHQLVENTDET YCIDNEALYDICFRTLKLAT PTYGDLNLHVSATMSGVTTSLRFPGQLNADLRKLAVNMV P F
Specificity	Recombinant fusion protein containing a sequence corresponding to amino acids 40-260 of human TUBB3 (Q13509).

ADDITIONAL INFORMATION

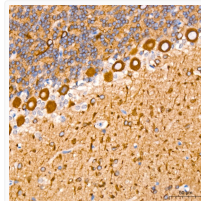
Note STRICTLY FOR FURTHER SCIENTIFIC RESEARCH USE ONLY (RUO). MUST NOT TO BE USED IN DIAGNOSTIC OR THERAPEUTIC APPLICATIONS.



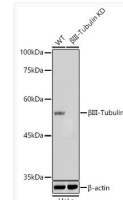
Immunofluorescence analysis of paraffin-embedded mouse brain using [KO Validated] Beta III-Tubulin Mouse monoclonal antibody (STJ11100102) at dilution of 1:200 (40x lens). Blue: DAPI for nuclear staining.



Immunohistochemistry analysis of Beta III-Tubulin in paraffin-embedded mouse brain tissue using [KD Validated] Beta III-Tubulin Mouse monoclonal antibody (STJ11100102) at a dilution of 1:200 (40x lens). High pressure antigen retrieval was performed with 0.01 M citrate buffer (pH 6.0) prior to immunohistochemistry staining.



Immunohistochemistry analysis of Beta III-Tubulin in paraffin-embedded rat brain tissue using [KD Validated] Beta III-Tubulin Mouse monoclonal antibody (STJ11100102) at a dilution of 1:200 (40x lens). High pressure antigen retrieval was performed with 0.01 M citrate buffer (pH 6.0) prior to immunohistochemistry staining.



Western blot analysis of lysates from wild type (WT) and Beta III-Tubulin knockdown (KD) HeLa cells, using [KD Validated] Beta III-Tubulin Mouse monoclonal antibody (STJ11100102) at 1:1000 dilution. Secondary antibody: HRP Goat Anti-Mouse IgG (H+L) at 1:10000 dilution. Lysates/proteins: 25 Mu g per lane. Blocking buffer: 3% nonfat dry milk in TBST. Detection: ECL Basic Kit. Exposure time: 1s.