

Anti-TTF1 antibody (806-905) (STJ11100098)

GENERAL INFORMATION

Product Type	Primary antibodies
Applications	IF/ICC/ELISA
Host / Source	Rabbit
Reactivity	Human

PRODUCT PROPERTIES

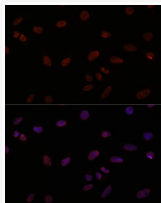
Clonality	Polyclonal
Concentration	Lot specific
Conjugation	Unconjugated
Purification	Affinity purification
Dilution Range	IF/ICC:1:50-1:200 ELISA:Recommended starting concentration is 1 µg/mL. Please optimize the concentration based on your specific assay requirements.
Formulation	PBS with 0.01% Thimerosal, 50% Glycerol, pH 7.3.
Isotype	IgG
Molecular Weight	Protein Mw: 103kDa Observed Mw: Refer to figures
Storage Instruction	Store at -20°C for up to 1 year from the date of receipt, and avoid repeat freeze-thaw cycles.

TARGET INFORMATION

Gene ID	7270
Gene Symbol	TTF1
UniProt ID	TTF1_HUMAN
Immunogen Region	806-905
Immunogen Sequence	RLKAVYVPFWQKKTPEIID YLYETTLPLLKEKLEKMMMEK KGTKIQTPAAPKQVFPFRDI FYYEDDSEGEDIEKESEGQA PCMAHACNSSTLGGQGRWII
Specificity	Recombinant fusion protein containing a sequence corresponding to amino acids 806-905 of human TTF1 (NP_031370.2).

ADDITIONAL INFORMATION

Note STRICTLY FOR FURTHER SCIENTIFIC RESEARCH USE ONLY (RUO). MUST NOT TO BE USED IN DIAGNOSTIC OR THERAPEUTIC APPLICATIONS.



Immunofluorescence analysis of U-2 OS cells using TTF1 Rabbit polyclonal antibody (STJ11100098) at dilution of 1:100. Secondary antibody: Cy3 Goat Anti-Rabbit IgG (H+L) at 1:500 dilution. Blue: DAPI for nuclear staining.