

Anti-AKT1/AKT2/AKT3 antibody (311-480) (STJ11100091)

GENERAL INFORMATION

Product Type	Primary antibodies
Applications	WB/IHC-P/IF/ICC/IP/ELISA
Host / Source	Rabbit
Reactivity	Human/Mouse/Rat

PRODUCT PROPERTIES

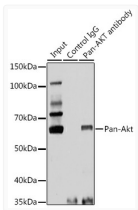
Clonality	Polyclonal
Concentration	Lot specific
Conjugation	Unconjugated
Purification	Affinity purification
Dilution Range	WB:1:500-1:1000 IHC-P:1:50-1:200 IF/CC:1:50-1:100 IP:0.5 Mu g-4 Mu g antibody for 400 Mu g-600 Mu g extracts of whole cells ELISA:Recommended starting concentration is 1 Mu g/mL. Please optimize the concentration based on your specif
Formulation	PBS with 0.05% Proclin300, 50% Glycerol, pH 7.3.
Isotype	IgG
Molecular Weight	Protein Mw: 48kDa/55kDa/51kDa/54kDa Observed Mw: 60kDa
Storage Instruction	Store at -20°C for up to 1 year from the date of receipt, and avoid repeat freeze-thaw cycles.

TARGET INFORMATION

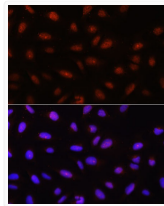
Gene ID	10000208 207 AKT3 AKT2 AKT3 HUMAN AKT2 HUMAN AKT1 HUMAN
Immunogen Region	311-480
Immunogen Sequence	GTPEYLAPEVLEDNDYGRAV DWWGLGVVMYEMMCGRLPFY NQDHEKLFELIMEEIRFPR TLGPPEAKSLLSGLLKKDPKQ RLGGSSEDAKEIMQHRFFAG IWWQHVVEKLSPPFKPQVT SETDTRYFDEEFTAQMITIT PPDQDDSMCEVDSERRPHFP QFSYSASGTA
Specificity	Recombinant fusion protein containing a sequence corresponding to amino acids 311-480 of human AKT1/AKT2/AKT3 (NP_005154.2).

ADDITIONAL INFORMATION

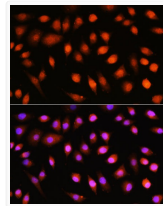
Note STRICTLY FOR FURTHER SCIENTIFIC RESEARCH USE ONLY (RUO). MUST NOT TO BE USED IN DIAGNOSTIC OR THERAPEUTIC APPLICATIONS.



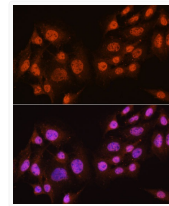
Immunoprecipitation analysis of 25 Mu g extracts of Rat brain cells using 3 Mu g Pan-Akt antibody (STJ11100091). Western blot was performed from the immunoprecipitate using Pan-Akt antibody (STJ11100091) at a dilution of 1:1000.



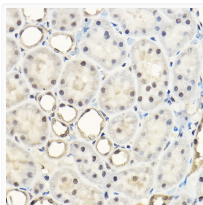
Immunofluorescence analysis of U-2 OS cells using Pan-Akt Rabbit polyclonal antibody (STJ11100091) at dilution of 1:100. Secondary antibody: Cy3 Goat Anti-Rabbit IgG (H+L) at 1:500 dilution. Blue: DAPI for nuclear staining.



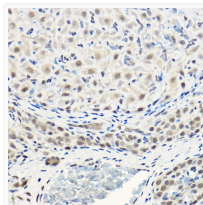
Immunofluorescence analysis of L929 cells using Pan-Akt Rabbit polyclonal antibody (STJ11100091) at dilution of 1:100. Secondary antibody: Cy3 Goat Anti-Rabbit IgG (H+L) at 1:500 dilution. Blue: DAPI for nuclear staining.



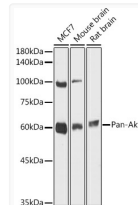
Immunofluorescence analysis of C6 cells using Pan-Akt Rabbit polyclonal antibody (STJ11100091) at dilution of 1:100. Secondary antibody: Cy3 Goat Anti-Rabbit IgG (H+L) at 1:500 dilution. Blue: DAPI for nuclear staining.



Immunohistochemistry analysis of Pan-Akt in paraffin-embedded rat kidney using Pan-Akt Rabbit polyclonal antibody (STJ11100091) at dilution of 1:100 (40x lens). Perform high pressure antigen retrieval with 10 mM citrate buffer pH 6. 0 before commencing with immunohistochemistry staining protocol.



Immunohistochemistry analysis of Pan-Akt in paraffin-embedded rat ovary using Pan-Akt Rabbit polyclonal antibody (STJ11100091) at dilution of 1:100 (40x lens). Perform high pressure antigen retrieval with 10 mM citrate buffer pH 6. 0 before commencing with immunohistochemistry staining protocol.



Western blot analysis of various lysates using Pan-Akt Rabbit polyclonal antibody (STJ11100091) at 1:1000 dilution. Secondary antibody: HRP Goat Anti-Rabbit IgG (H+L) (STJS000856) at 1:10000 dilution. Lysates/proteins: 25 Mu g per lane. Blocking buffer: 3% nonfat dry milk in TBST. Detection: ECL Basic Kit. Exposure time: 30s.