

Anti-ZDHHC5 antibody (130-230) (STJ11100085)

GENERAL INFORMATION

Product Type	Primary antibodies
Applications	WB/ELISA
Host / Source	Rabbit
Reactivity	Human/Mouse

PRODUCT PROPERTIES

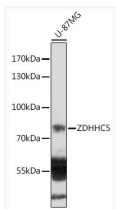
Clonality	Polyclonal
Concentration	Lot specific
Conjugation	Unconjugated
Purification	Affinity purification
Dilution Range	WB:1:500-1:2000 ELISA:Recommended starting concentration is 1 Mu g/mL. Please optimize the concentration based on your specific assay requirements.
Formulation	PBS with 0.01% Thimerosal, 50% Glycerol, pH 7.3.
Isotype	IgG
Molecular Weight	Protein Mw: 78kDa Observed Mw: 78kDa
Storage Instruction	Store at -20°C for up to 1 year from the date of receipt, and avoid repeat freeze-thaw cycles.

TARGET INFORMATION

Gene ID	25921
Gene Symbol	ZDHHC5
UniProt ID	ZDHC5_HUMAN
Immunogen Region	130-230
Immunogen Sequence	FDHHCPPWVNNCIGRRNYRYF FLFLLSLTAHIMGVFGFGLL YVLYHIEELSGVRTAVTMAV MCVAGLFFIPVAGLTGFHVV LVARGRTTNEQVTGKFRGGV N
Specificity	A synthetic peptide corresponding to a sequence within amino acids 130-230 of human ZDHHC5 (NP_056272.2).

ADDITIONAL INFORMATION

Note STRICTLY FOR FURTHER SCIENTIFIC RESEARCH USE ONLY (RUO). MUST NOT TO BE USED IN DIAGNOSTIC OR THERAPEUTIC APPLICATIONS.



Western blot analysis of lysates from U-87MG cells, using ZDHHC5 Rabbit polyclonal antibody (STJ11100085) at 1:1000 dilution. Secondary antibody: HRP Goat Anti-Rabbit IgG (H+L) (STJS000856) at 1:10000 dilution. Lysates/proteins: 25 Mu g per lane. Blocking buffer: 3% nonfat dry milk in TBST. Detection: ECL Basic Kit. Exposure time: 90s.