

## Anti-LDHB antibody (2-334) (STJ11100069)

### GENERAL INFORMATION

Product Type	Primary antibodies
Applications	WB/IF/ICC/ELISA
Host / Source	Rabbit
Reactivity	Human/Mouse/Rat

### PRODUCT PROPERTIES

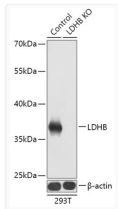
Clonality	Polyclonal
Concentration	Lot specific
Conjugation	Unconjugated
Purification	Affinity purification
Dilution Range	WB:1:500-1:2000 IF/CC:1:50-1:200 ELISA:Recommended starting concentration is 1 Mu g/mL. Please optimize the concentration based on your specific assay requirements.
Formulation	PBS with 0.05% Proclin300, 50% Glycerol, pH 7.3.
Isotype	IgG
Molecular Weight	Protein Mw: 37kDa Observed Mw: 36kDa
Storage Instruction	Store at -20°C for up to 1 year from the date of receipt, and avoid repeat freeze-thaw cycles.

### TARGET INFORMATION

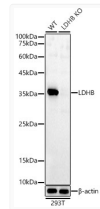
Gene ID	<a href="#">3945</a>
Gene Symbol	<a href="#">LDHB</a>
UniProt ID	<a href="#">LDHB_HUMAN</a>
Immunogen Region	2-334
Immunogen Sequence	ATLKEKLIAPVAEEEEATVPN NKITVVGVGQVGMACAISIL GKSLADELALVDVLEDKLG EMMDLQHGSLFLQTPKIVAD KDYSVTANSKIVVVTAGVVRQ QEGESRLNLVQRNVNVFKFI IPQIVKYSPPDCIIVVSNPV DILTYVTWKL SGLPKHRVIG SGCNLD SARFRYLM AEKLG I HPSSCHGWILGEHGDSSAV WSGVNVAGVSLQELNPEMGT DNDSENWKEVHKM VVESAY
Specificity	Recombinant fusion protein containing a sequence corresponding to amino acids 2-334 of human LDHB (NP_002291.1).

### ADDITIONAL INFORMATION

Note **STRICTLY FOR FURTHER SCIENTIFIC RESEARCH USE ONLY (RUO). MUST NOT TO BE USED IN DIAGNOSTIC OR THERAPEUTIC APPLICATIONS.**



Western blot analysis of extracts from normal (control) and LDHB knockout (KO) 293T cells, using LDHB antibody (STJ11100069) at 1:1000 dilution. Secondary antibody: HRP Goat Anti-rabbit IgG (H+L) (STJS000856) at 1:10000 dilution. Lysates/proteins: 25 Mu g per lane. Blocking buffer: 3% non-fat dry milk in TBST. Detection: ECL Basic Kit. Exposure time: 1s.



Western blot analysis of extracts from wild type (WT) and LDHB knockout (KO) 293T cells, using LDHB rabbit polyclonal antibody (STJ11100069) at 1:500 dilution. Secondary antibody: HRP Goat Anti-rabbit IgG (H+L) (STJS000856) at 1:10000 dilution. Lysates/proteins: 25ug per lane. Blocking buffer: 3% non-fat dry milk in TBST. Detection: ECL Basic Kit. Exposure time: 45s.