

Anti-CBR1 antibody (1-277) (STJ11100047)

GENERAL INFORMATION

Product Type	Primary antibodies
Applications	WB/ELISA
Host / Source	Rabbit
Reactivity	Human/Mouse

PRODUCT PROPERTIES

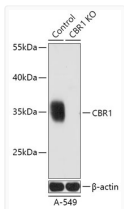
Clonality	Polyclonal
Concentration	Lot specific
Conjugation	Unconjugated
Purification	Affinity purification
Dilution Range	WB:1:500-1:2000 ELISA:Recommended starting concentration is 1 Mu g/mL. Please optimize the concentration based on your specific assay requirements.
Formulation	PBS with 0.01% Thimerosal, 50% Glycerol, pH 7.3.
Isotype	IgG
Molecular Weight	Protein Mw: 30kDa Observed Mw: 30kDa
Storage Instruction	Store at -20°C for up to 1 year from the date of receipt, and avoid repeat freeze-thaw cycles.

TARGET INFORMATION

Gene ID	873
Gene Symbol	CBR1
UniProt ID	CBR1_HUMAN
Immunogen Region	1-277
Immunogen Sequence	MSSGIHVALVTGGNKIGILA IVRDLCLRFSGDVLTARDV TRGQAAVQQLQAEGLSPRFH QLDIDDLQSIRALRDFLRKE YGGLDVLVNNAGIAFKVADP TPFHIQAEVTMKTNFFGTRD VCTELLPLIKPQGRVNVSS IMSVRALKSCSPELQQKFRS ETITEELVGLMNKFFVEDTK KGVHQKEGWSSAYGVTKIG VTVLSRIHARKLSEQRKGDK ILLNACCPGWVRTDMAGPK
Specificity	Recombinant fusion protein containing a sequence corresponding to amino acids 1-277 of human CBR1 (NP_001748.1).

ADDITIONAL INFORMATION

Note **STRICTLY FOR FURTHER SCIENTIFIC RESEARCH USE ONLY (RUO). MUST NOT TO BE USED IN DIAGNOSTIC OR THERAPEUTIC APPLICATIONS.**



Western blot analysis of lysates from wild type (WT) and CBR1 knockout (KO) A-549 cells, using [KO Validated] CBR1 Rabbit polyclonal antibody (STJ11100047) at 1:3000 dilution. Secondary antibody: HRP Goat Anti-Rabbit IgG (H+L) (STJS000856) at 1:10000 dilution. Lysates/proteins: 25 Mu g per lane. Blocking buffer: 3% nonfat dry milk in TBST. Detection: ECL Basic Kit. Exposure time: 5s.