

Anti-UBE2S antibody (122-221) (STJ11100037)

GENERAL INFORMATION

Product Type	Primary antibodies
Applications	WB/ELISA
Host / Source	Rabbit
Reactivity	Human/Mouse/Rat

PRODUCT PROPERTIES

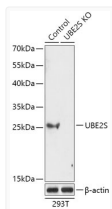
Clonality	Polyclonal
Concentration	Lot specific
Conjugation	Unconjugated
Purification	Affinity purification
Dilution Range	WB:1:200-1:2000 ELISA:Recommended starting concentration is 1 µg/mL. Please optimize the concentration based on your specific assay requirements.
Formulation	PBS with 0.09% Sodium Azide, 50% Glycerol, pH 7.3.
Isotype	IgG
Molecular Weight	Protein Mw: 24kDa Observed Mw: 26kDa
Storage Instruction	Store at -20°C for up to 1 year from the date of receipt, and avoid repeat freeze-thaw cycles.

TARGET INFORMATION

Gene ID	27338
Gene Symbol	UBE2S
UniProt ID	UBE2S_HUMAN
Immunogen Region	122-221
Immunogen Sequence	HPNPESALNEEAGRLLLENY EEYAARARLLTEIHGGAGGP SGRAEAGRALASGTEASSTD PGAPGGPGGAEGPMAKKHAG ERDKKLAAKKTKDKRALRR
Specificity	Recombinant fusion protein containing a sequence corresponding to amino acids 122-221 of human UBE2S (NP_055316.2).

ADDITIONAL INFORMATION

Note STRICTLY FOR FURTHER SCIENTIFIC RESEARCH USE ONLY (RUO). MUST NOT TO BE USED IN DIAGNOSTIC OR THERAPEUTIC APPLICATIONS.



Western blot analysis of lysates from wild type (WT) and UBE2S knockout (KO) 293T cells, using [KO Validated] UBE2S Rabbit polyclonal antibody (STJ11100037) at 1:1000 dilution. Secondary antibody: HRP Goat Anti-Rabbit IgG (H+L) (STJS000856) at 1:10000 dilution. Lysates/proteins: 25 µg per lane. Blocking buffer: 3% nonfat dry milk in TBST. Detection: ECL Basic Kit. Exposure time: 5s.