

Anti-IL6 antibody (30-212) (STJ110936)

GENERAL INFORMATION

Product Type	Primary antibodies
Applications	WB/IF/ICC/ELISA
Host / Source	Rabbit
Reactivity	Human/Mouse/Rat

PRODUCT PROPERTIES

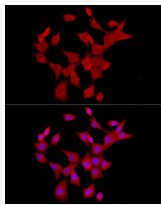
Clonality	Polyclonal
Concentration	Lot specific
Conjugation	Unconjugated
Purification	Affinity purification
Dilution Range	WB:1:500-1:1000 IF/CC:1:50-1:200 ELISA:Recommended starting concentration is 1 µg/mL. Please optimize the concentration based on your specific assay requirements.
Formulation	PBS with 0.09% Sodium Azide, 50% Glycerol, pH 7.3.
Isotype	IgG
Molecular Weight	Protein Mw: 24kDa Observed Mw: 23-30kDa/19, 22kDa
Storage Instruction	Store at -20°C for up to 1 year from the date of receipt, and avoid repeat freeze-thaw cycles.

TARGET INFORMATION

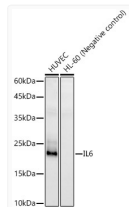
Gene ID	3569
Gene Symbol	IL6
UniProt ID	IL6_HUMAN
Immunogen Region	30-212
Immunogen Sequence	VPPGEDSKDVAAPHRQPLTS SERIDKQIRYILDGIALRK ETCNKSNMCESSKEALAENN LNLPKMAEKDGCFSQGFNEE TCLVKIITGLLEFEVYLEYL QNRFESSEEQARAVQMSTKV LIQFLQKKAKNLDAITTPDP TTNASLLTKLQAQNWQLQDM TTHLILRSFKEFLQSSLRAL RQM
Specificity	A synthetic peptide corresponding to a sequence within amino acids 30-212 of human IL6 (NP_000591.1).

ADDITIONAL INFORMATION

Note STRICTLY FOR FURTHER SCIENTIFIC RESEARCH USE ONLY (RUO). MUST NOT TO BE USED IN DIAGNOSTIC OR THERAPEUTIC APPLICATIONS.



Immunofluorescence analysis of NIH/3T3 cells using IL6 Rabbit polyclonal antibody (STJ110936) at dilution of 1:50 (40x lens). Secondary antibody: Cy3 Goat Anti-Rabbit IgG (H+L) at 1:500 dilution. Blue: DAPI for nuclear staining.



Western blot analysis of various lysates, using IL6 Rabbit polyclonal antibody (STJ110936) at 1:1000 dilution. Secondary antibody: HRP Goat Anti-Rabbit IgG (H+L) (STJS000856) at 1:10000 dilution. Lysates/proteins: 25µg per lane. Blocking buffer: 3% nonfat dry milk in TBST. Detection: ECL Enhanced Kit. Exposure time: 90s.