

## Anti-TLR4 antibody (27-228) (STJ110884)

### GENERAL INFORMATION

Product Type	Primary antibodies
Applications	WB/IF/ICC/ELISA
Host / Source	Rabbit
Reactivity	Human/Mouse

### PRODUCT PROPERTIES

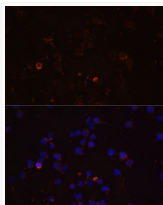
Clonality	Polyclonal
Concentration	Lot specific
Conjugation	Unconjugated
Purification	Affinity purification
Dilution Range	WB:1:500-1:1000 IF/CC:1:50-1:200 ELISA:Recommended starting concentration is 1 Mu g/mL. Please optimize the concentration based on your specific assay requirements.
Formulation	PBS with 0.05% Proclin300, 50% Glycerol, pH 7.3.
Isotype	IgG
Molecular Weight	Protein Mw: 96kDa Observed Mw: 100-135kDa
Storage Instruction	Store at -20°C for up to 1 year from the date of receipt, and avoid repeat freeze-thaw cycles.

### TARGET INFORMATION

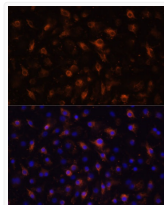
Gene ID	<a href="#">7099</a>
Gene Symbol	<a href="#">TLR4</a>
UniProt ID	<a href="#">TLR4_HUMAN</a>
Immunogen Region	27-228
Immunogen Sequence	EPCVEVVPNITYQCMELNFY KIPDNLPFSTKNLDSLNFNPL RHLGYSYFFSFPELQVLDLS RCEIQTIEDGAYQSLSHLST LILTGNIQSLALGAFSGLS SLQKLVAVETNLASLENFPI GHLKTLKELNVAHNLIQSFK LPEYFSNLTNLEHLDLSSNK IQSIYCTDLRVLHQMPLLNL SLDLSLNPMMFIQPGAFKEI RL
Specificity	Recombinant fusion protein containing a sequence corresponding to amino acids 27-228 of human TLR4 (NP_612564.1).

### ADDITIONAL INFORMATION

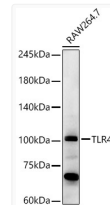
Note STRICTLY FOR FURTHER SCIENTIFIC RESEARCH USE ONLY (RUO). MUST NOT TO BE USED IN DIAGNOSTIC OR THERAPEUTIC APPLICATIONS.



Immunofluorescence analysis of THP-1 cells using TLR4 Rabbit polyclonal antibody (STJ110884) at dilution of 1:100 (40x lens). Secondary antibody: Cy3 Goat Anti-Rabbit IgG (H+L) at 1:500 dilution. Blue: DAPI for nuclear staining.



Immunofluorescence analysis of RAW264.7 cells using TLR4 Rabbit polyclonal antibody (STJ110884) at dilution of 1:100 (40x lens). Secondary antibody: Cy3 Goat Anti-Rabbit IgG (H+L) at 1:500 dilution. Blue: DAPI for nuclear staining.



Western blot analysis of various lysates, using TLR4 Rabbit polyclonal antibody (STJ110884) at 1:1000 dilution. Secondary antibody: HRP Goat Anti-Rabbit IgG (H+L) (STJS000856) at 1:10000 dilution. Lysates/proteins: 25 Mu g per lane. Blocking buffer: 3% nonfat dry milk in TBST. Detection: ECL Basic Kit. Exposure time: 180s.