

Anti-Phospho-MAPK14-T180/Y182 antibody (STJ110862)

GENERAL INFORMATION

Product Type	Primary antibodies
Applications	WB/IF/ICC/ELISA
Host / Source	Rabbit
Reactivity	Human/Mouse/Rat

PRODUCT PROPERTIES

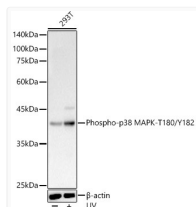
Clonality	Polyclonal
Concentration	Lot specific
Conjugation	Unconjugated
Purification	Affinity purification
Dilution Range	WB:1:2000-1:20000 IF/CC:1:50-1:200 ELISA:Recommended starting concentration is 1 μ g/mL. Please optimize the concentration based on your specific assay requirements.
Formulation	PBS with 0.02% Sodium Azide, 50% Glycerol, pH 7.3.
Isotype	IgG
Molecular Weight	Protein Mw: 29kDa/34kDa/35kDa/41kDa Observed Mw: 43kDa
Storage Instruction	Store at -20°C for up to 1 year from the date of receipt, and avoid repeat freeze-thaw cycles.

TARGET INFORMATION

Gene ID	6300 1432 5600 MAPK12 MAPK14 MK12_HUMAN MK14_HUMAN MK11_HUMAN
Immunogen Sequence	MTGYV
Specificity	A synthetic phosphorylated peptide around T180 & Y182 of human p38 MAPK (NP_620581.1).

ADDITIONAL INFORMATION

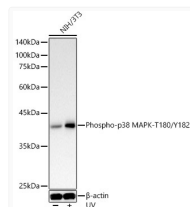
Note **STRICTLY FOR FURTHER SCIENTIFIC RESEARCH USE ONLY (RUO). MUST NOT TO BE USED IN DIAGNOSTIC OR THERAPEUTIC APPLICATIONS.**



Western blot analysis of lysates from 293T cells, using Phospho-p38 MAPK-T180/Y182 Rabbit pAb (STJ110862) at 1:18000 dilution. 293T cells were treated by UV at room temperature for 15-30 minutes.

Secondary antibody: HRP-conjugated Goat anti-Rabbit IgG (H+L) (STJS000856) at 1:10000 dilution.

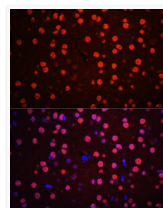
Lysates/proteins: 25 μ g per lane.
Blocking buffer: 3% nonfat dry milk in TBST.
Detection: ECL Basic Kit
Exposure time: 20s.



Western blot analysis of lysates from NIH/3T3 cells, using Phospho-p38 MAPK-T180/Y182 Rabbit pAb (STJ110862) at 1:18000 dilution. NIH/3T3 cells were treated by UV at room temperature for 15-30 minutes.

Secondary antibody: HRP-conjugated Goat anti-Rabbit IgG (H+L) (STJS000856) at 1:10000 dilution.

Lysates/proteins: 25 μ g per lane.
Blocking buffer: 3% nonfat dry milk in TBST.
Detection: ECL Basic Kit
Exposure time: 20s.



Immunofluorescence analysis of paraffin-embedded mouse brain using Phospho-p38 MAPK-T180/Y182 Rabbit pAb (STJ110862) at dilution of 1:100. Secondary antibody: Cy3-conjugated Goat anti-Rabbit IgG (H+L) (STJS001166) at 1:500 dilution. Blue: DAPI for nuclear staining.