

Anti-NUDT18 antibody (1-323) (STJ110812)

GENERAL INFORMATION

Product Type	Primary antibodies
Applications	WB/ELISA
Host / Source	Rabbit
Reactivity	Human

PRODUCT PROPERTIES

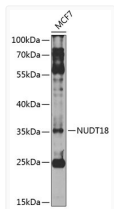
Clonality	Polyclonal
Concentration	Lot specific
Conjugation	Unconjugated
Purification	Affinity purification
Dilution Range	WB:1:500-1:2000 ELISA:Recommended starting concentration is 1 µg/mL. Please optimize the concentration based on your specific assay requirements.
Formulation	PBS with 0.02% Sodium Azide, 50% Glycerol, pH 7.3.
Isotype	IgG
Molecular Weight	Protein Mw: 36kDa Observed Mw: 36kDa
Storage Instruction	Store at -20°C for up to 1 year from the date of receipt, and avoid repeat freeze-thaw cycles.

TARGET INFORMATION

Gene ID	79873
Gene Symbol	NUDT18
UniProt ID	NUDT18_HUMAN
Immunogen Region	1-323
Immunogen Sequence	MASEGLAGALASVLAGQGSS VHSCDSAPAGEPPAPVRLRK NVCYVVLAVFLSEQDEVLLI QEAKRECRGSWYLPAGRMEP GETIVEALQREVKEEAGLHC EPETLLSVEERGPSWVRFVF LARPTGGILKTSKEADAESL QAAWYPRSLPTPLRAHDIL HLVELAAQYRQQARHPLLP QELPCDLVCQRLVATFTSAQ TVWVLVGTVMGPHLPVTACG LDPMEQRGGMKMAVLRLLQ
Specificity	Recombinant fusion protein containing a sequence corresponding to amino acids 1-323 of human NUDT18 (NP_079091.3).

ADDITIONAL INFORMATION

Note **STRICTLY FOR FURTHER SCIENTIFIC RESEARCH USE ONLY (RUO). MUST NOT TO BE USED IN DIAGNOSTIC OR THERAPEUTIC APPLICATIONS.**



Western blot analysis of lysates from MCF-7 cells, using NUDT18 Rabbit pAb (STJ110812) at 1:1000 dilution.

Secondary antibody: HRP-conjugated Goat anti-Rabbit IgG (H+L) (STJS000856) at 1:10000 dilution.

Lysates/proteins: 25 µg per lane.

Blocking buffer: 3% nonfat dry milk in TBST.

Detection: ECL Enhanced Kit

Exposure time: 10s.