

Anti-TEFM antibody (36-210) (STJ110809)

GENERAL INFORMATION

Product Type	Primary antibodies
Applications	WB/IHC-P/IF/ICC/ELISA
Host / Source	Rabbit
Reactivity	Human/Mouse/Rat

PRODUCT PROPERTIES

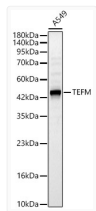
Clonality	Polyclonal
Concentration	Lot specific
Conjugation	Unconjugated
Purification	Affinity purification
Dilution Range	WB:1:500-1:2000 IHC-P:1:50-1:200 IF/ICC:1:50-1:200 ELISA:Recommended starting concentration is 1 µg/mL. Please optimize the concentration based on your specific assay requirements.
Formulation	PBS with 0.02% Sodium Azide, 50% Glycerol, pH 7.3.
Isotype	IgG
Molecular Weight	Protein Mw: 42kDa Observed Mw: 50kDa
Storage Instruction	Store at -20°C for up to 1 year from the date of receipt, and avoid repeat freeze-thaw cycles.

TARGET INFORMATION

Gene ID	79736
Gene Symbol	TEFM
UniProt ID	TEFM_HUMAN
Immunogen Region	36-210
Immunogen Sequence	KSTTPKKITPNVTFCDENAK EPENALDKLFSSEQQASILH VLNTASTKELEAFRLLRGR SINIVEHRENFPGFQNLKESL MNVPLFKYKSTVQVCNSILC PKTGREKRKSPENRFLRLL KPDIERERLKA VNSIIVF GTRRIAWAHLDRKLTVLDWQ QSDRWLSLMRGIYSS
Specificity	Recombinant fusion protein containing a sequence corresponding to amino acids 36-210 of human TEFM (NP_078959.3).

ADDITIONAL INFORMATION

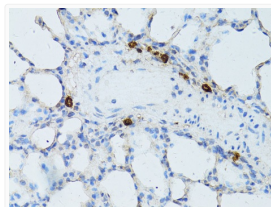
Note **STRICTLY FOR FURTHER SCIENTIFIC RESEARCH USE ONLY (RUO). MUST NOT TO BE USED IN DIAGNOSTIC OR THERAPEUTIC APPLICATIONS.**



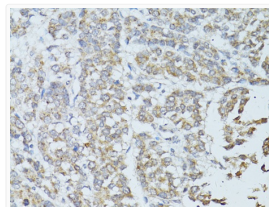
Western blot analysis of lysates from A549 cells, using TEFM Rabbit pAb (STJ110809) at 1:2000 dilution.

Secondary antibody: HRP-conjugated Goat anti-Rabbit IgG (H+L) (STJS000856) at 1:10000 dilution.

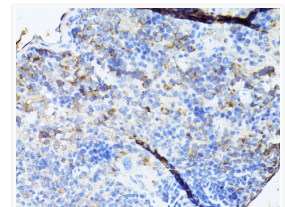
Lysates/proteins: 25 µg per lane.
Blocking buffer: 3% nonfat dry milk in TBST.
Detection: ECL Basic Kit
Exposure time: 20s.



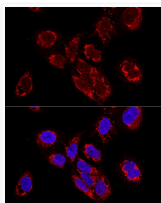
Immunohistochemistry analysis of paraffin-embedded Rat lung using TEFM Rabbit pAb (STJ110809) at dilution of 1:100 (40x lens).
Microwave antigen retrieval performed with 0.01M PBS Buffer (pH 7.2) prior to immunohistochemistry staining.



Immunohistochemistry analysis of paraffin-embedded Human colon carcinoma using TEFM Rabbit pAb (STJ110809) at dilution of 1:100 (40x lens).
Microwave antigen retrieval performed with 0.01M PBS Buffer (pH 7.2) prior to immunohistochemistry staining.



Immunohistochemistry analysis of paraffin-embedded Mouse spleen using TEFM Rabbit pAb (STJ110809) at dilution of 1:100 (40x lens).
Microwave antigen retrieval performed with 0.01M PBS Buffer (pH 7.2) prior to immunohistochemistry staining.



Confocal immunofluorescence analysis of U2OS cells using TEFM Rabbit pAb (STJ110809) at dilution of 1:100. Blue: DAPI for nuclear staining.