

Anti-MKL1 antibody (1-280) (STJ110802)

GENERAL INFORMATION

Product Type	Primary antibodies
Applications	WB/IHC-P/IF/ICC/ELISA
Host / Source	Rabbit
Reactivity	Human/Mouse/Rat

PRODUCT PROPERTIES

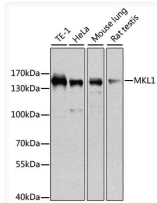
Clonality	Polyclonal
Concentration	Lot specific
Conjugation	Unconjugated
Purification	Affinity purification
Dilution Range	WB:1:500-1:2000 IHC-P:1:50-1:200 IF/CC:1:50-1:200 ELISA:Recommended starting concentration is 1 µg/mL. Please optimize the concentration based on your specific assay requirements.
Formulation	PBS with 0.02% Sodium Azide, 50% Glycerol, pH 7.3.
Isotype	IgG
Molecular Weight	Protein Mw: 99kDa Observed Mw: 145kDa
Storage Instruction	Store at -20°C for up to 1 year from the date of receipt, and avoid repeat freeze-thaw cycles.

TARGET INFORMATION

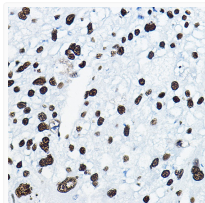
Gene ID	57591
Gene Symbol	MRTFA
UniProt ID	MRTFA_HUMAN
Immunogen Region	1-280
Immunogen Sequence	MPPLKSPAAFHEQRRSLERA RTEDYLKRKIRSRPERSELV RMHILEETSAPESLQAKQLK LKRLARLADDLNEKIAQRPGP MELVEKNILPVESSLKEAII VGQVNYPKVADSSSFDESS DALSPSEQPASHESQGSVPSP LEARVSEPLLSATSASPTQV VSQPLMGRDSREMLFLAEQP PLPPPPLPPSLTNGTTIPT AKSTPTLIKQSQPKSASEKS QRSKKAKELKPKVKKLLKYH
Specificity	Recombinant fusion protein containing a sequence corresponding to amino acids 1-280 of human MKL1 (NP_065882.1).

ADDITIONAL INFORMATION

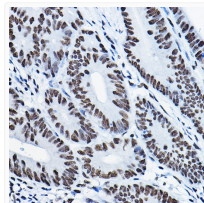
Note STRICTLY FOR FURTHER SCIENTIFIC RESEARCH USE ONLY (RUO). MUST NOT TO BE USED IN DIAGNOSTIC OR THERAPEUTIC APPLICATIONS.



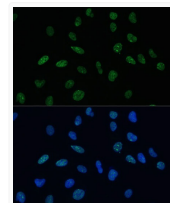
Western blot analysis of various lysates using MKL1 Rabbit pAb (STJ110802) at 1:1000 dilution. Secondary antibody: HRP-conjugated Goat anti-Rabbit IgG (H+L) (STJS000856) at 1:10000 dilution.
Lysates/proteins: 25 µg per lane.
Blocking buffer: 3% nonfat dry milk in TBST.
Detection: ECL Basic Kit
Exposure time: 10s.



Immunohistochemistry analysis of paraffin-embedded Human liver cancer using MKL1 Rabbit pAb (STJ110802) at dilution of 1:100 (40x lens). Microwave antigen retrieval performed with 0.01M PBS Buffer (pH 7.2) prior to immunohistochemistry staining.



Immunohistochemistry analysis of paraffin-embedded Human colon carcinoma using MKL1 Rabbit pAb (STJ110802) at dilution of 1:100 (40x lens). Microwave antigen retrieval performed with 0.01M PBS Buffer (pH 7.2) prior to immunohistochemistry staining.



Immunofluorescence analysis of U-2 OS cells using MKL1 Rabbit pAb (STJ110802) at dilution of 1:100 (40x lens). Secondary antibody: Cy3-conjugated Goat anti-Rabbit IgG (H+L) (STJS001166) at 1:500 dilution. Blue: DAPI for nuclear staining.