

Anti-ARHGEF3 antibody (287-526) (STJ110788)

GENERAL INFORMATION

Product Type	Primary antibodies
Applications	WB/ELISA
Host / Source	Rabbit
Reactivity	Human/Mouse

PRODUCT PROPERTIES

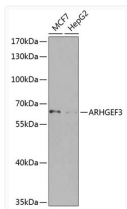
Clonality	Polyclonal
Concentration	Lot specific
Conjugation	Unconjugated
Purification	Affinity purification
Dilution Range	WB:1:500-1:2000 ELISA:Recommended starting concentration is 1 µg/mL. Please optimize the concentration based on your specific assay requirements.
Formulation	PBS with 0.02% Sodium Azide, 50% Glycerol, pH 7.3.
Isotype	IgG
Molecular Weight	Protein Mw: 60kDa Observed Mw: 60kDa
Storage Instruction	Store at -20°C for up to 1 year from the date of receipt, and avoid repeat freeze-thaw cycles.

TARGET INFORMATION

Gene ID	50650
Gene Symbol	ARHGEF3
UniProt ID	ARHG3_HUMAN
Immunogen Region	287-526
Immunogen Sequence	LEEAINIIQGIVAEINTKTG ESECRRYKERLLYLEEGQKD SLIDSSRVLCCHGELKNNRG VKLHVFLFQEVLVITRAVTH NEQLCYQLYRQPIPVKDLLL EDLQDGEVRLGGSLRGAFSN NERIKNFFRVSFKNQSQSQT HSLQANDTFNKQQLNLCIRQ AKETVLC AAGQAGVLDSEGS FLNPTTGSRELQGETKLEQM DQSDSESDCSMDTSEVSLDC ERMEQTDSSCGNSRHGESN
Specificity	Recombinant fusion protein containing a sequence corresponding to amino acids 287-526 of human ARHGEF3 (NP_062455.1).

ADDITIONAL INFORMATION

Note **STRICTLY FOR FURTHER SCIENTIFIC RESEARCH USE ONLY (RUO). MUST NOT TO BE USED IN DIAGNOSTIC OR THERAPEUTIC APPLICATIONS.**



Western blot analysis of various lysates using ARHGEF3 Rabbit pAb (STJ110788) at 1:1000 dilution.

Secondary antibody: HRP-conjugated Goat anti-Rabbit IgG (H+L) (STJS000856) at 1:10000 dilution.

Lysates/proteins: 25 µg per lane.

Blocking buffer: 3% nonfat dry milk in TBST.

Detection: ECL Basic Kit

Exposure time: 60s.