

Anti-HIRA antibody (250-550) (STJ110759)

GENERAL INFORMATION

Product Type	Primary antibodies
Applications	WB/IHC-P/ELISA
Host / Source	Rabbit
Reactivity	Human

PRODUCT PROPERTIES

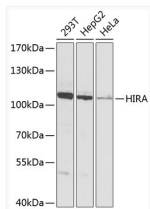
Clonality	Polyclonal
Concentration	Lot specific
Conjugation	Unconjugated
Purification	Affinity purification
Dilution Range	WB:1:500-1:2000 IHC-P:1:100-1:200 ELISA:Recommended starting concentration is 1 µg/mL. Please optimize the concentration based on your specific assay requirements.
Formulation	PBS with 0.02% Sodium Azide, 50% Glycerol, pH 7.3.
Isotype	IgG
Molecular Weight	Protein Mw: 112kDa Observed Mw: 112kDa
Storage Instruction	Store at -20°C for up to 1 year from the date of receipt, and avoid repeat freeze-thaw cycles.

TARGET INFORMATION

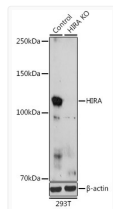
Gene ID	7290
Gene Symbol	HIRA
UniProt ID	HIRA_HUMAN
Immunogen Region	250-550
Immunogen Sequence	AQIEREGWKTNDMDFVGHK AVTVVKFNPKIFKKKQKNGS SAKPSCPYPCCCAVGSKDRSL SVWLTCLKRPLVVIHELFDK SIMDISWTLNGLGILVCSMD GSVAFLDQFSQDELGDPLSEE EKSRIHQSTYKSLAIMTEA QLSTAVIENPEMLKYQRRQQ QQQLDQKSAATREMGSAATSV AGVNGESLEDIRKLLKKQ VETRTADGRRRRITPLCIAQL DTGDFSTAFFNSIPLSGSL
Specificity	Recombinant fusion protein containing a sequence corresponding to amino acids 250-550 of human HIRA (NP_003316.3).

ADDITIONAL INFORMATION

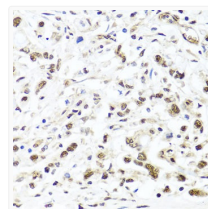
Note STRICTLY FOR FURTHER SCIENTIFIC RESEARCH USE ONLY (RUO). MUST NOT TO BE USED IN DIAGNOSTIC OR THERAPEUTIC APPLICATIONS.



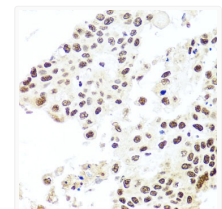
Western blot analysis of various lysates using [KO Validated] HIRA Rabbit pAb (STJ110759) at 1:1000 dilution.
Secondary antibody: HRP-conjugated Goat anti-Rabbit IgG (H+L) (STJS000856) at 1:10000 dilution.
Lysates/proteins: 25 µg per lane.
Blocking buffer: 3% nonfat dry milk in TBST.
Detection: ECL Basic Kit
Exposure time: 10s.



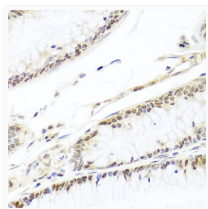
Western blot analysis of lysates from wild type (WT) and HIRA knockout (KO) 293T cells, using [KO Validated] HIRA Rabbit pAb (STJ110759) at 1:1000 dilution.
Secondary antibody: HRP-conjugated Goat anti-Rabbit IgG (H+L) (STJS000856) at 1:10000 dilution.
Lysates/proteins: 25 µg per lane.
Blocking buffer: 3% nonfat dry milk in TBST.
Detection: ECL Basic Kit
Exposure time: 180s.



Immunohistochemistry analysis of paraffin-embedded Human gastric cancer using [KO Validated] HIRA Rabbit pAb (STJ110759) at dilution of 1:100 (40x lens). Microwave antigen retrieval performed with 0.01M PBS Buffer (pH 7.2) prior to immunohistochemistry staining.



Immunohistochemistry analysis of paraffin-embedded Human lung cancer using [KO Validated] HIRA Rabbit pAb (STJ110759) at dilution of 1:100 (40x lens). Microwave antigen retrieval performed with 0.01M PBS Buffer (pH 7.2) prior to immunohistochemistry staining.



Immunohistochemistry analysis of paraffin-embedded Human colon carcinoma using [KO Validated] HIRA Rabbit pAb (STJ110759) at dilution of 1:100 (40x lens). Microwave antigen retrieval performed with 0.01M PBS Buffer (pH 7.2) prior to immunohistochemistry staining.