

## Anti-HLA-E antibody (1-100) (STJ110727)

### GENERAL INFORMATION

Product Type	Primary antibodies
Applications	WB/ELISA
Host / Source	Rabbit
Reactivity	Human

### PRODUCT PROPERTIES

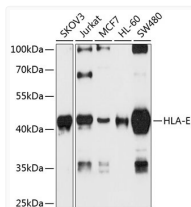
Clonality	Polyclonal
Concentration	Lot specific
Conjugation	Unconjugated
Purification	Affinity purification
Dilution Range	WB:1:500-1:2000 ELISA:Recommended starting concentration is 1 µg/mL. Please optimize the concentration based on your specific assay requirements.
Formulation	PBS with 0.02% Sodium Azide, 50% Glycerol, pH 7.3.
Isotype	IgG
Molecular Weight	Protein Mw: 40kDa Observed Mw: 45kDa
Storage Instruction	Store at -20°C for up to 1 year from the date of receipt, and avoid repeat freeze-thaw cycles.

### TARGET INFORMATION

Gene ID	<a href="#">3133</a>
Gene Symbol	<a href="#">HLA-E</a>
UniProt ID	<a href="#">HLAE_HUMAN</a>
Immunogen Region	1-100
Immunogen Sequence	MVDGTL L L L L L L S E A L A L T Q T W A G S H S L K Y F H T S V S R P G R G E P R F I S V G Y V D D T Q F V R F D N D A A S P R M V P R A P W M E Q E G S E Y W D R E T R S A R D T A Q I F R V N L R
Specificity	A synthetic peptide corresponding to a sequence within amino acids 1-100 of human HLA-E (NP_005507.3).

### ADDITIONAL INFORMATION

Note STRICTLY FOR FURTHER SCIENTIFIC RESEARCH USE ONLY (RUO). MUST NOT TO BE USED IN DIAGNOSTIC OR THERAPEUTIC APPLICATIONS.



Western blot analysis of various lysates using HLA-E Rabbit pAb (STJ110727) at 1:1000 dilution.

Secondary antibody: HRP-conjugated Goat anti-Rabbit IgG (H+L) (STJS000856) at 1:10000 dilution.

Lysates/proteins: 25 µg per lane.

Blocking buffer: 3% nonfat dry milk in TBST.

Detection: ECL Basic Kit

Exposure time: 90s.