

Anti-HBA2 antibody (1-142) (STJ110725)

GENERAL INFORMATION

Product Type	Primary antibodies
Applications	WB/IF/ICC/ELISA
Host / Source	Rabbit
Reactivity	Human/Mouse/Rat

PRODUCT PROPERTIES

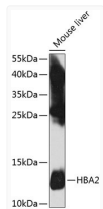
Clonality	Polyclonal
Concentration	Lot specific
Conjugation	Unconjugated
Purification	Affinity purification
Dilution Range	WB:1:500-1:2000 IF/CC:1:50-1:200 ELISA:Recommended starting concentration is 1 Mu g/mL. Please optimize the concentration based on your specific assay requirements.
Formulation	PBS with 0.02% Sodium Azide, 50% Glycerol, pH 7.3.
Isotype	IgG
Molecular Weight	Protein Mw: 15kDa Observed Mw: 13kDa
Storage Instruction	Store at -20°C for up to 1 year from the date of receipt, and avoid repeat freeze-thaw cycles.

TARGET INFORMATION

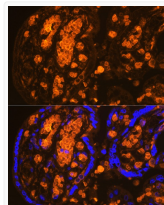
Gene ID	3039/3040
Gene Symbol	HBA1.HBA2
UniProt ID	HBA_HUMAN
Immunogen Region	1-142
Immunogen Sequence	MVLSPADKTNVKAAWGKVGVA HAGEYGAEALERMFLSFPTT KTYFPHFDLSHGSAQVKGHG KKVADALTNVAHVDDMPNA LSALSDLHAHKLRVDPVNFK LLSHCLLVTLAAHLPAEFTP AVHASLDKFLASVSTVLTSK YR
Specificity	Recombinant fusion protein containing a sequence corresponding to amino acids 1-142 of human HBA2 (NP_000508.1).

ADDITIONAL INFORMATION

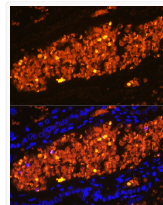
Note **STRICTLY FOR FURTHER SCIENTIFIC RESEARCH USE ONLY (RUO). MUST NOT TO BE USED IN DIAGNOSTIC OR THERAPEUTIC APPLICATIONS.**



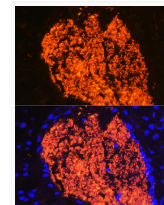
Western blot analysis of lysates from mouse liver, using HBA2 Rabbit pAb (STJ110725) at 1:1000 dilution.
 Secondary antibody: HRP-conjugated Goat anti-Rabbit IgG (H+L) (STJS000856) at 1:10000 dilution.
 Lysates/proteins: 25 Mu g per lane.
 Blocking buffer: 3% nonfat dry milk in TBST.
 Detection: ECL Basic Kit
 Exposure time: 10s.



Immunofluorescence analysis of paraffin-embedded Human placenta using HBA2 Rabbit pAb (STJ110725) at dilution of 1:100 (40x lens).
 Secondary antibody: Cy3-conjugated Goat anti-Rabbit IgG (H+L) (STJS001166) at 1:500 dilution.
 Blue: DAPI for nuclear staining.



Immunofluorescence analysis of paraffin-embedded Rat placenta using HBA2 Rabbit pAb (STJ110725) at dilution of 1:100 (40x lens).
 Secondary antibody: Cy3-conjugated Goat anti-Rabbit IgG (H+L) (STJS001166) at 1:500 dilution.
 Blue: DAPI for nuclear staining.



Immunofluorescence analysis of paraffin-embedded Mouse placenta using HBA2 Rabbit pAb (STJ110725) at dilution of 1:100 (40x lens).
 Secondary antibody: Cy3-conjugated Goat anti-Rabbit IgG (H+L) (STJS001166) at 1:500 dilution.
 Blue: DAPI for nuclear staining.