

Anti-GNRH2 antibody (24-120) (STJ110722)

GENERAL INFORMATION

Product Type	Primary antibodies
Applications	WB/ELISA
Host / Source	Rabbit
Reactivity	Human/Mouse/Rat

PRODUCT PROPERTIES

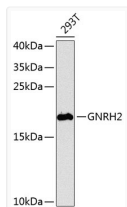
Clonality	Polyclonal
Concentration	Lot specific
Conjugation	Unconjugated
Purification	Affinity purification
Dilution Range	WB:1:500-1:2000 ELISA:Recommended starting concentration is 1 Mu g/mL. Please optimize the concentration based on your specific assay requirements.
Formulation	PBS with 0.02% Sodium Azide, 50% Glycerol, pH 7.3.
Isotype	IgG
Molecular Weight	Protein Mw: 13kDa Observed Mw: 20kDa
Storage Instruction	Store at-20°C for up to 1 year from the date of receipt, and avoid repeat freeze-thaw cycles.

TARGET INFORMATION

Gene ID	2797
Gene Symbol	GNRH2
UniProt ID	GON2_HUMAN
Immunogen Region	24-120
Immunogen Sequence	QHWSHGWYPGGKRALSSAQD PQNALRPPGRALDTAAGSPV QTAHGLPSDALAPLDDSMPW EGRTTAQWLSLHRKRHLARTL LTAAREPRPAPPSSNKV
Specificity	Recombinant fusion protein containing a sequence corresponding to amino acids 24-120 of human GNRH2 (NP_001492.1).

ADDITIONAL INFORMATION

Note **STRICTLY FOR FURTHER SCIENTIFIC RESEARCH USE ONLY (RUO). MUST NOT TO BE USED IN DIAGNOSTIC OR THERAPEUTIC APPLICATIONS.**



Western blot analysis of lysates from 293T cells, using GNRH2 Rabbit pAb (STJ110722) at 1:1000 dilution.

Secondary antibody: HRP-conjugated Goat anti-Rabbit IgG (H+L) (STJS000856) at 1:10000 dilution.

Lysates/proteins: 25 Mu g per lane.

Blocking buffer: 3% nonfat dry milk in TBST.

Detection: ECL Basic Kit

Exposure time: 90s.