

Anti-GNB2 antibody (1-340) (STJ110720)

GENERAL INFORMATION

Product Type	Primary antibodies
Applications	WB/IHC-P/IF/ICC/ELISA
Host / Source	Rabbit
Reactivity	Human/Mouse/Rat

PRODUCT PROPERTIES

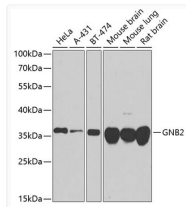
Clonality	Polyclonal
Concentration	Lot specific
Conjugation	Unconjugated
Purification	Affinity purification
Dilution Range	WB:1:500-1:2000 IHC-P:1:50-1:200 IF/ICC:1:50-1:200 ELISA:Recommended starting concentration is 1 µg/mL. Please optimize the concentration based on your specific assay requirements.
Formulation	PBS with 0.02% Sodium Azide, 50% Glycerol, pH 7.3.
Isotype	IgG
Molecular Weight	Protein Mw: 37kDa Observed Mw: 37kDa
Storage Instruction	Store at -20°C for up to 1 year from the date of receipt, and avoid repeat freeze-thaw cycles.

TARGET INFORMATION

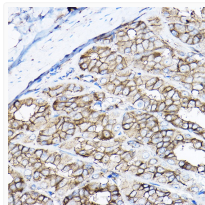
Gene ID	2783
Gene Symbol	GNB2
UniProt ID	GNB2_HUMAN
Immunogen Region	1-340
Immunogen Sequence	MSELEQLRQAEQLRNQIRD ARKACGDSTLTQITAGLDPV GRIQMRTRRTLRGHLAKIYA MHWGTD SRLLSASQDGKLI IWDSYTTNKVHAIPLRSSWV MTCAYAPSGNFVACGGLDNI CSYSLKTRREGNVRVRSRELP GHTGYLSCCRFLDDNQIITS SGTTCALWDIETGQQTGVGF AGHSGDVMLSLAPDGRFTV SGACDASIKLWDVDRDSMCRQ TFIGHESDINAVAFFPNGY
Specificity	Recombinant fusion protein containing a sequence corresponding to amino acids 1-340 of human GNB2 (NP_005264.2).

ADDITIONAL INFORMATION

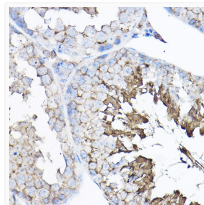
Note STRICTLY FOR FURTHER SCIENTIFIC RESEARCH USE ONLY (RUO). MUST NOT TO BE USED IN DIAGNOSTIC OR THERAPEUTIC APPLICATIONS.



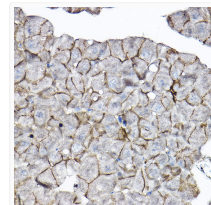
Western blot analysis of various lysates using GNB2 Rabbit pAb (STJ110720) at 1:1000 dilution. Secondary antibody: HRP-conjugated Goat anti-Rabbit IgG (H+L) (STJS000856) at 1:10000 dilution.
Lysates/proteins: 25 µg per lane.
Blocking buffer: 3% nonfat dry milk in TBST.
Detection: ECL Basic Kit
Exposure time: 90s.



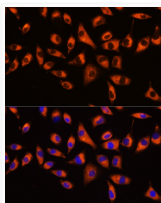
Immunohistochemistry analysis of paraffin-embedded Rat stomach using GNB2 Rabbit pAb (STJ110720) at dilution of 1:100 (40x lens). High pressure antigen retrieval performed with 0.01M Citrate Bufferr (pH 6.0) prior to immunohistochemistry staining.



Immunohistochemistry analysis of paraffin-embedded Mouse testis using GNB2 Rabbit pAb (STJ110720) at dilution of 1:100 (40x lens). High pressure antigen retrieval performed with 0.01M Citrate Bufferr (pH 6.0) prior to immunohistochemistry staining.



Immunohistochemistry analysis of paraffin-embedded Mouse pancreas using GNB2 Rabbit pAb (STJ110720) at dilution of 1:100 (40x lens). High pressure antigen retrieval performed with 0.01M Citrate Bufferr (pH 6.0) prior to immunohistochemistry staining.



Immunofluorescence analysis of L929 cells using GNB2 Rabbit pAb (STJ110720) at dilution of 1:100 (40x lens). Secondary antibody: Cy3-conjugated Goat anti-Rabbit IgG (H+L) (STJS001166) at 1:500 dilution. Blue: DAPI for nuclear staining.